

HOFFMANN POWER PRODUCTS

PARTS LIST 2017

HPE1512C –PUMP



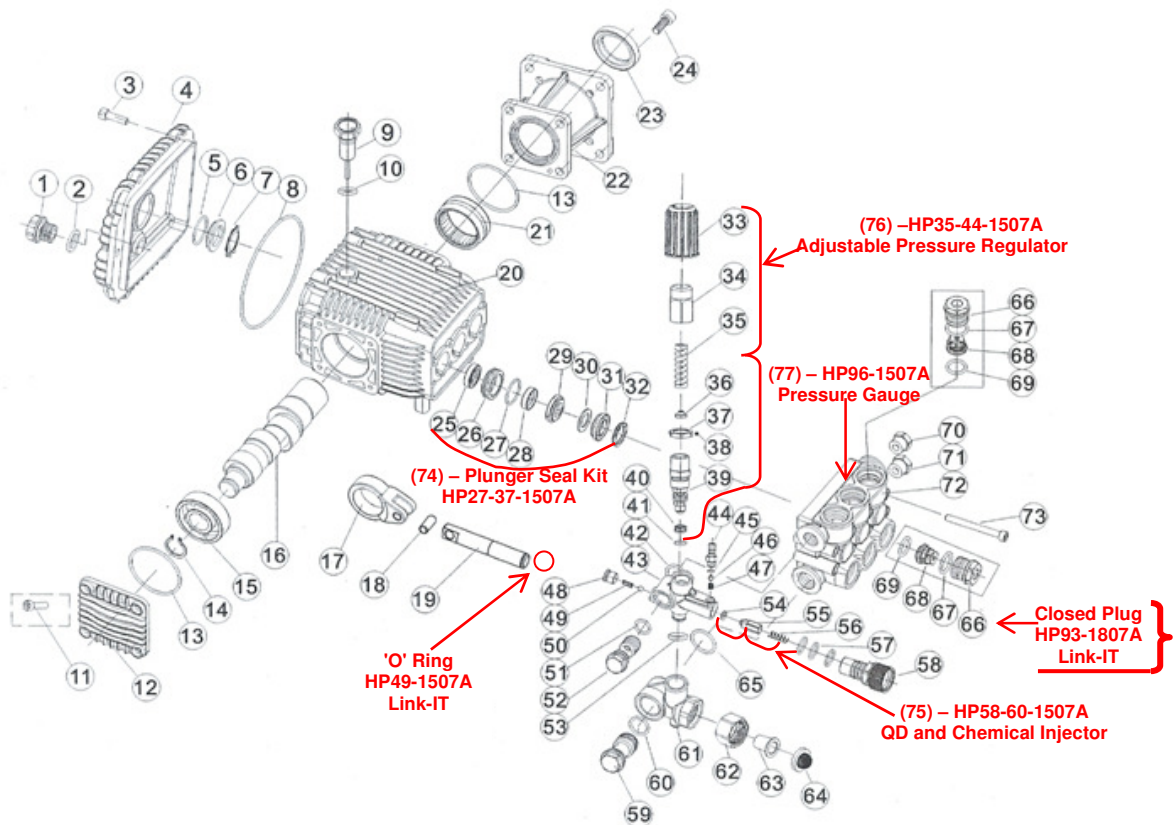
ALL PARTS ARE SUBJECT TO STANDARD HOFFMANN TERMS AND CONDITIONS OF SALE 2010

Replacement parts are not manufactured, sold or warranted by O.E.M's and any part numbers and or descriptions are used for identification purposes only.

Manufacturers names, numbers and descriptions are used for reference purposes only and it is not implied that any part listed is the product of the manufacturers.

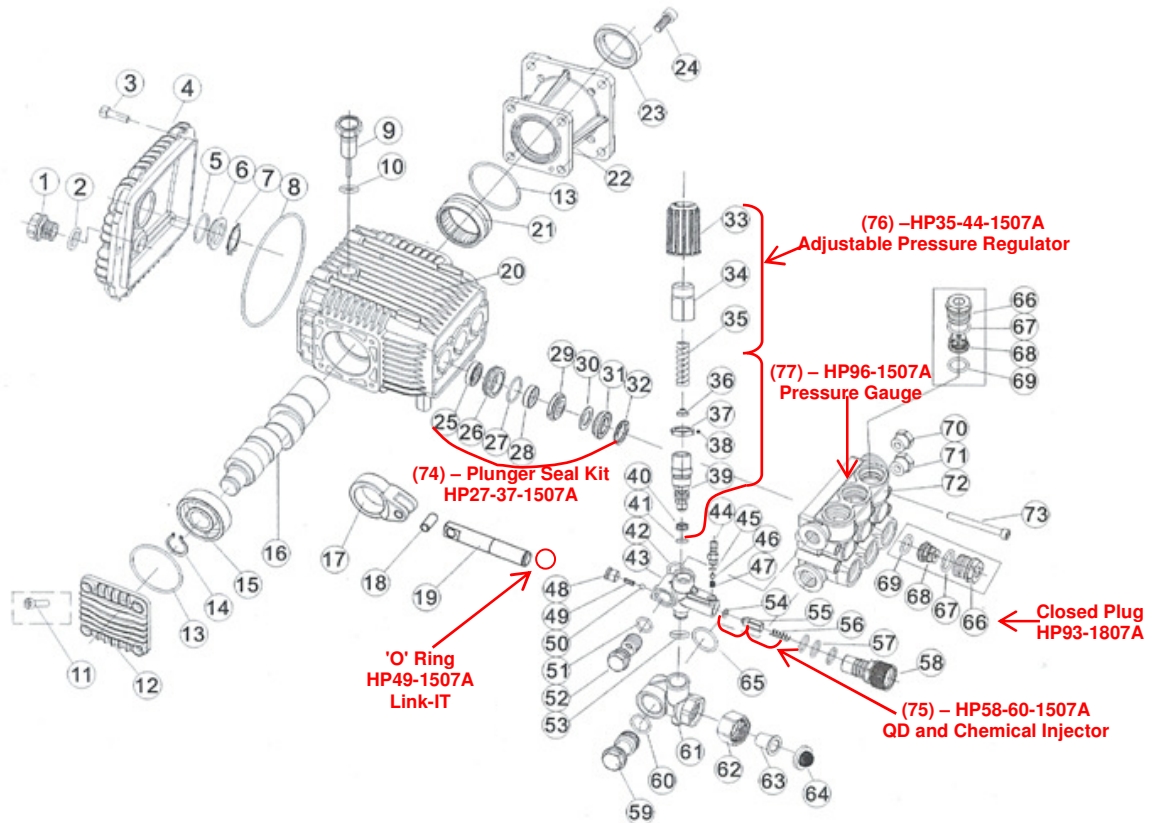
All pictures and drawings are for reference purposes only; any specifications appearing in any documents emanating from The Company are approximate only and are subject to modifications without notice.

All rights reserved, material contained in this publication for which copyright is acknowledged. No part of this publication may be reproduced or transmitted in any form or by any means without written permission of the copyright holder. Copyright Hoffmann International©2012.



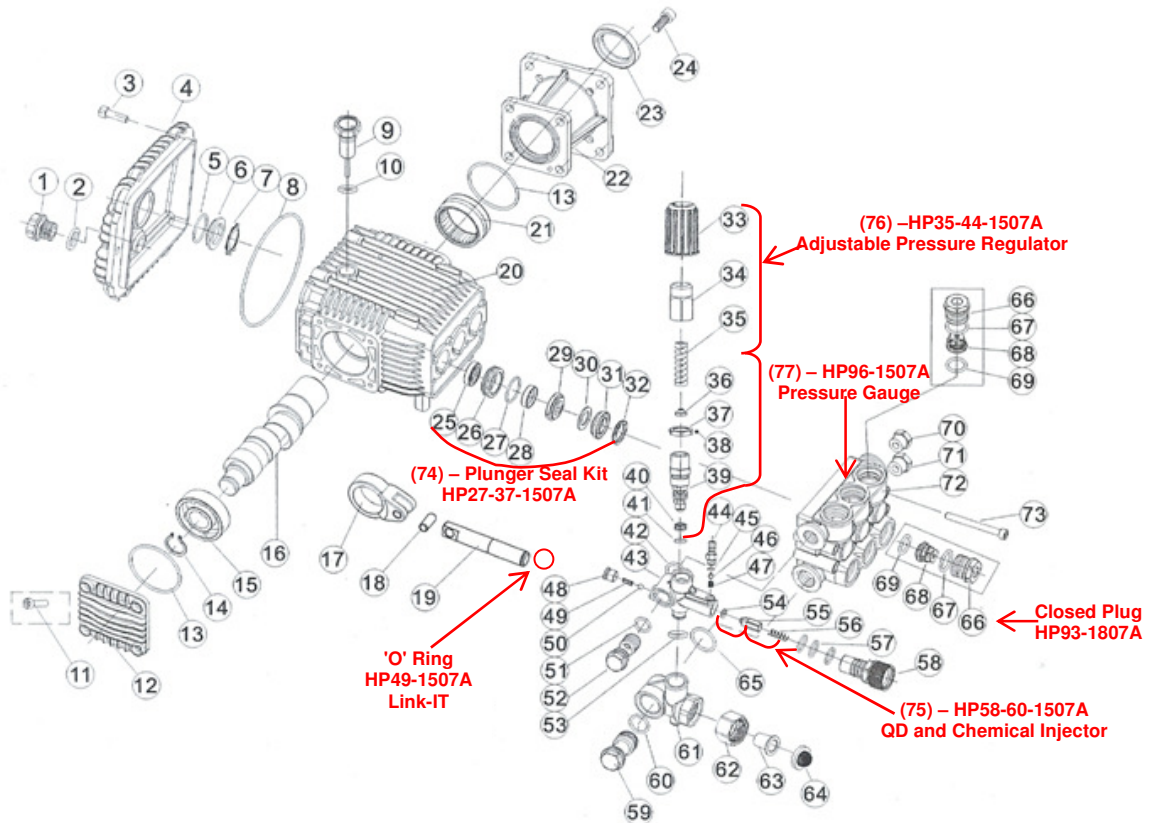
HPE-1512C

| No | Description | QTY. | Part No. |
|----|---------------------------------------|------|--|
| 1 | Drain Plug | 1 | HP02-1507A – Fits All |
| 2 | Gasket Drain Plug | 1 | HP03-1507A – Fits All |
| 3 | Bolt Crankcase Cover | 6 | HP01-1507A |
| 4 | Crankcase Cover | 1 | HP05-1507A/1509A |
| 5 | Side Glass 'O' Ring | 1 | HP03-1507A |
| 6 | Oil Gauge c/w 'O' Ring | 1 | HP02/3-1507A |
| 7 | Oil Gauge Circlip (Link-IT) | 1 | HP127-1512C |
| 8 | 'O' Ring Crank Cover | 1 | HP07-1507A |
| 9 | Oil Inlet Plug | 1 | HP09-1507A |
| 10 | Oil Inlet Plug 'O' Ring | 1 | HP10-1507A |
| 11 | Bolt, Crankshaft Cover | 4 | HP01-1507A |
| 12 | Crankshaft Cover | 1 | HP08-1507A/1509A |
| 13 | 'O' Ring, Crankshaft Cover | 1 | HP13-1507A/1509A |
| 14 | Snap Ring on Crankshaft | 1 | HP14-1507A |
| 15 | Ball Bearing and Crankshaft (Link-IT) | 1 | HP16-1507A/JP |
| 16 | Crankshaft | 1 | HP16-1507A |
| 17 | Conrod | 1 | HP17-1507A |
| 18 | Fix Pin – on Conrod (Link-IT) | 1 | HP24-1512C |
| 19 | Ceramic Plunger (Link-IT) | 1 | HP28-1507A/Plunger Assly HP25-30-1512A/1507A |
| 20 | Crankcase | 1 | HP22-1507A |
| 21 | Needle Roller Bearing on Crank | 1 | HP23-1507A |
| 22 | Flange | 1 | HP20-1507A |
| 23 | Oil Seal Flange | 1 | HP26-1507A |
| 24 | Bolt, Flange | 4 | HP07-1507A |



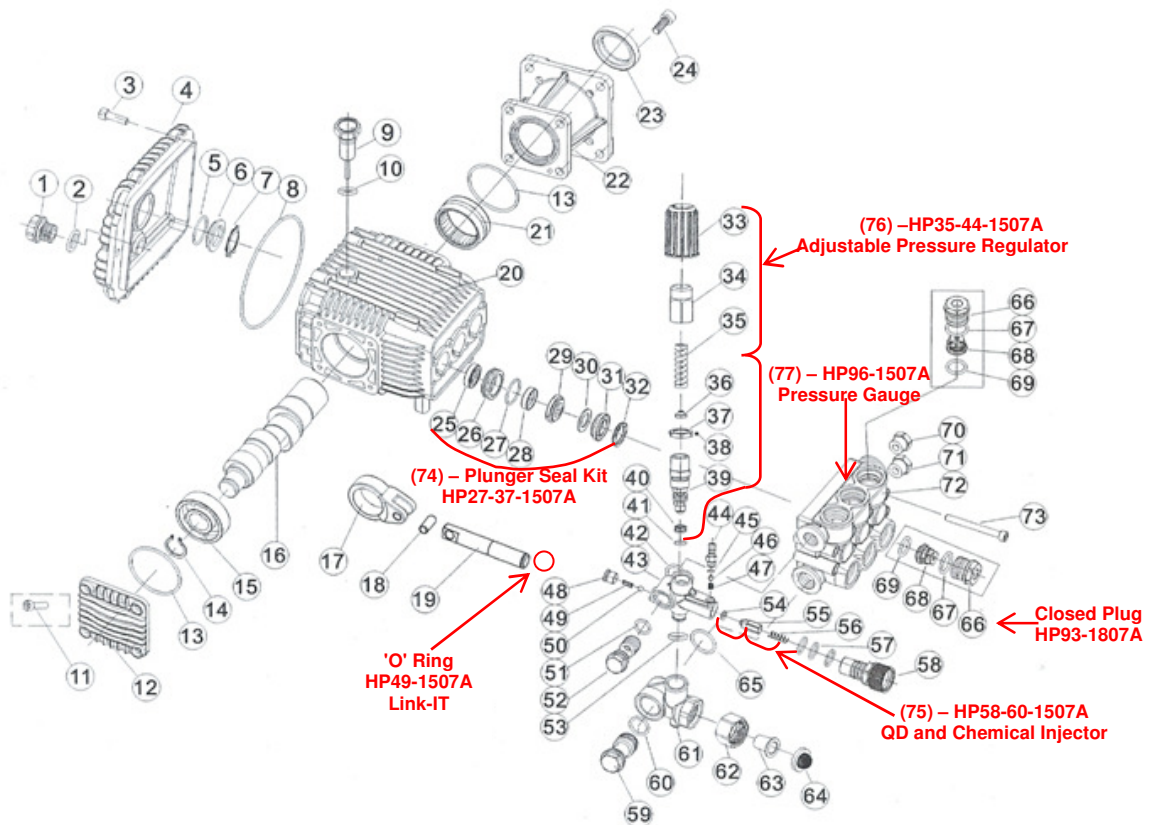
HPE-1512C

| No | Description | QTY. | Part No. |
|----|------------------------------|------|-------------------------------------|
| 25 | | | } Plunger Sealing Kit HP27-37-1507A |
| 26 | | | |
| 27 | | | |
| 28 | | | |
| 29 | | | |
| 31 | | | |
| 32 | | | |
| 33 | Pressure Adj. Plastic Cap | 1 | HP36-1507A |
| 34 | Pressure Adjusting Seat | 1 | HP37-1507A |
| 35 | Spring, Pressure Adjustor | 1 | HP38-1507A |
| 36 | Spring Seat | 1 | HP34-1507A |
| 37 | Jam Nut | 1 | |
| 38 | Fix Screw | 1 | |
| 39 | Unloader Valve SP07 | 1 | HP42-44-1507A |
| 40 | Valve Seat | 1 | HP34-1507A |
| 41 | 'O' Ring, Gasket, Valve Seat | 1 | HP54-1507A |
| 42 | 'O' Ring, Valve Housing | 1 | |
| 43 | Water Outlet Tee Connection | 1 | HP50-1507A |
| 44 | Soap Suction Nozzle | 1 | HP45-1507A |
| 45 | 'O' Ring | 1 | HP46-1507A |
| 46 | Steel Ball | 1 | HP47-1507A |
| 47 | Spring (Link-IT) | 1 | HP48-1507A |
| 48 | Valve Plug | 1 | |
| 49 | Spring | 1 | |



HPE-1512C

| | | | |
|----|-----------------------------------|---|---|
| 50 | Steel Ball | 1 | |
| 51 | 'O' Ring, Outlet Banjo Bolt | 1 | HP56-1507A |
| 52 | Outlet Banjo Bolt | 1 | HP57-1507A |
| 53 | 'O' Ring, Banjo Bolt | 1 | HP56-1507A |
| 54 | 'O' Ring, Check Valve | 1 | HP58-1507A |
| 55 | Check Valve, Water Outlet | 1 | HP59-1507A |
| 56 | Spring, Check Valve | 1 | HP60-1507A |
| 57 | 'O' Ring, Outlet Quick Connection | 1 | HP56-1507A |
| 58 | Outlet Quick Connector | 1 | HP-QC Outlet |
| 59 | Inlet Banjo Bolt | 1 | HP66-1507A |
| 60 | 'O' Ring Inlet Banjo Bolt | 1 | HP65-1507A |
| 61 | Bypass Water Inlet Tee | 1 | HP64-1507A/HP64-70-1507A – Water Inl. Assly |
| 62 | Swivel Nut Inlet (Link-IT) | 1 | HP68-1507A |
| 63 | Inlet Connector (Link-IT) | 1 | HP66-1507A |
| 64 | Water Inlet Filter | 1 | HP70-1507A |
| 65 | 'O' Ring, Water Inlet Tee | 1 | HP67-1507A |
| 66 | Check Valve Cap (Link-IT) | 5 | HP93-1507A |
| 67 | 'O' Ring, Check Valve Cap | 6 | HP76-1507A |
| 68 | Check Valve Assly | 6 | HP75-76-1507A |
| 69 | 'O' Ring, Check Valve | 6 | HP76-1507A |
| 70 | Outlet Connector Plug | 2 | HPX41-1507A |
| 71 | Thermal Protect Valve | 1 | HP79-1507A |



HPE-1512C

| | | | |
|----|-------------------------------|---|---------------|
| 72 | Manifold Head - Cylinder | 1 | HP77-1507A |
| 73 | Bolts - Cylinder | 8 | HP80-1507A |
| 74 | Plunger Seal Kit | 1 | HP27-37-1507A |
| 75 | QD and Chemical Injector | 1 | HP58-60-1507A |
| 76 | Adjustable Pressure Regulator | 1 | HP35-44-1507A |
| 77 | Pressure Gauge c/w Adaptor | 1 | HP96-1507A |