

# HOFFMANN POWER PRODUCTS

## PARTS LIST 2017

### Hoffmann HP1507A – "New" High Pressure Pump End



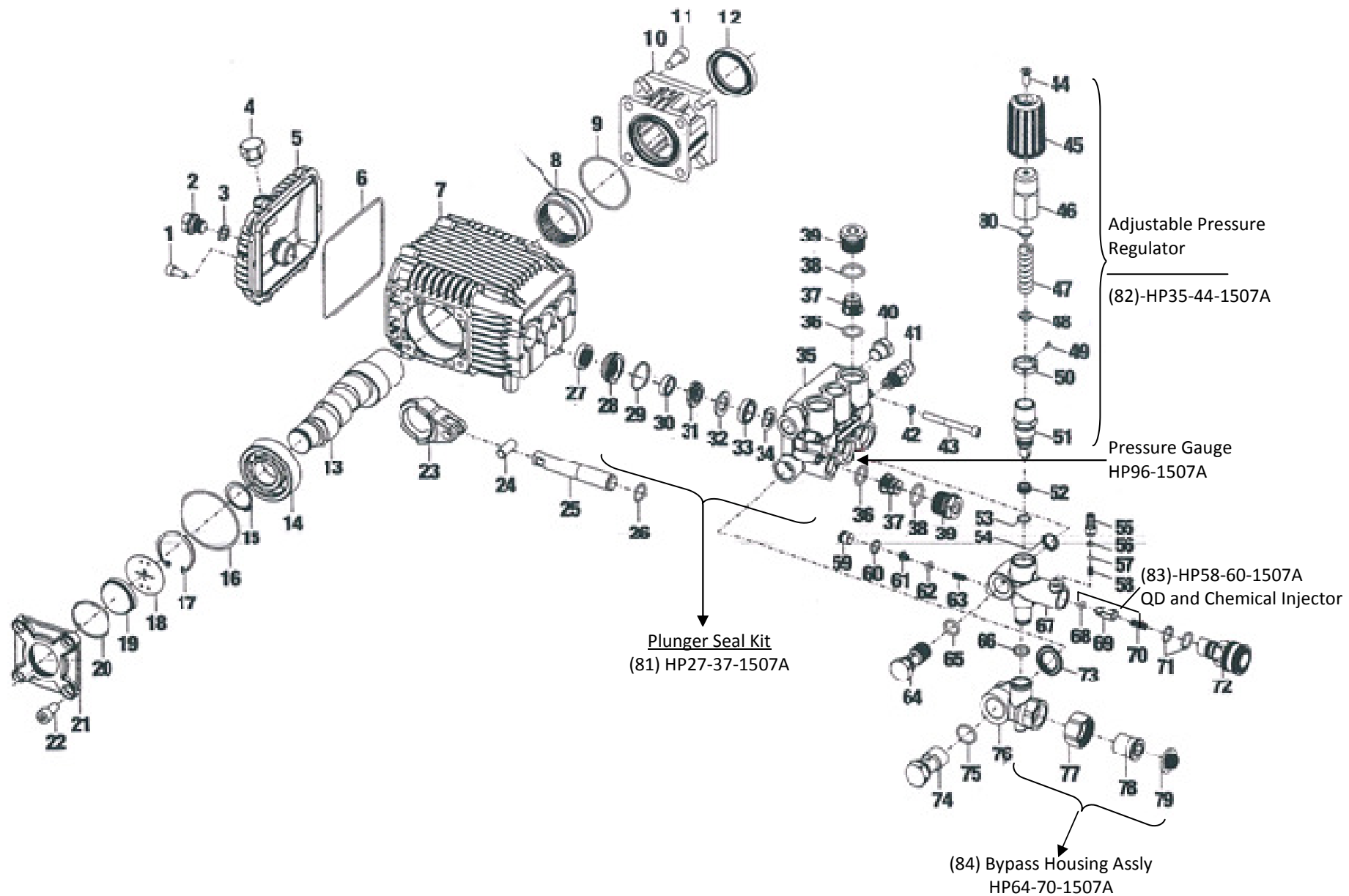
ALL PARTS ARE SUBJECT TO STANDARD HOFFMANN TERMS AND CONDITIONS OF SALE 2010

Replacement parts are not manufactured, sold or warranted by O.E.M's and any part numbers and or descriptions are used for identification purposes only.

Manufacturers names, numbers and descriptions are used for reference purposes only and it is not implied that any part listed is the product of the manufacturers.

All pictures and drawings are for reference purposes only; any specifications appearing in any documents emanating from The Company are approximate only and are subject to modifications without notice.

All rights reserved, material contained in this publication for which copyright is acknowledged. No part of this publication may be reproduced or transmitted in any form or by any means without written permission of the copyright holder. Copyright Hoffmann International©2012.



| No. | Part No.      | Qty | Description                         |                         |
|-----|---------------|-----|-------------------------------------|-------------------------|
| 1   | HP01-1507A    | 6   | Bolt, Crankcase Cover               |                         |
| 2   | HP02-1507A    | 1   | Oil – Drain Plug                    |                         |
| 3   | HP03-1507A    | 1   | 'O' Ring, Oil Drain Plug            |                         |
| 4   | HP04-1507A    | 1   | Oil Inlet Plug – New                |                         |
| 5   | HP05-1507A    | 1   | Crankcase Cover – New               |                         |
| 6   | HP06-1507A    | 1   | Gasket, Crankcase Cover – New       |                         |
| 7   | HP22-1507A    | 1   | Crankcase – New                     |                         |
| 8   | HP23-1507A    | 1   | Needle Bearing, Crankshaft          |                         |
| 9   | HP24-1507A    | 1   | 'O' Ring, Flange – New              |                         |
| 10  | HP25-1507A    | 1   | Flange                              |                         |
| 11  | HP07-1507A    | 4   | Bolt, Flange                        |                         |
| 12  | HP26-1507A    | 1   | Oil Seal, Flange                    |                         |
| 13  | HP16-1512C    | 1   | Crankshaft – New                    |                         |
| 14  | HP16-1507A/JP |     | Ball Bearing – Crankshaft (Link-IT) |                         |
| 15  | HP14-1507A    | 1   | Circlip – Scrap Ring – New          |                         |
| 16  | HP13-1507A    | 1   | 'O' Ring, Crankshaft Cover – New    |                         |
| 17  | HP12-1507A    | 1   | Circlip, Retaining Ring – New       |                         |
| 18  | HP11-1507A    | 1   | Oil Level Plate – New               |                         |
| 19  | HP10-1507A    | 1   | Oil Gauge – Sightglass – New        |                         |
| 20  | HP09-1507A    | 1   | 'O' Ring, Oil Gauge – New           |                         |
| 21  | HP08-1507A    | 1   | Crankshaft Cover – New              |                         |
| 22  | HP01-1507A    | 4   | Bolt, Crankshaft Cover              |                         |
| 23  | HP17-1507A    | 3   | Conrod                              |                         |
| 24  | HP19-1507A    | 3   | Pin, Conrod                         |                         |
| 25  | HP20-1507A    | 3   | Ceramic Plunger – New               |                         |
| 26  |               | 3   | 'O' Ring, Plunger                   |                         |
| 27  | HP27-37-1507A | 3   | Plunger Seal Kit                    | Oil Seal, Plunger       |
| 28  |               | 3   |                                     | Locating Ring           |
| 29  |               | 3   |                                     | 'O' Ring, Locating Ring |
| 30  |               | 3   |                                     | Low Pressure Water Seal |
| 31  |               | 3   |                                     | Compression Ring        |
| 32  |               | 3   |                                     | Compression Flake       |

|    |                 |   |   |
|----|-----------------|---|---|
| 33 | } HP27-37-1507A |   | } Plunger Seal Kit                                  |
| 34 |                 |   |   |
| 35 | HP73-1512C      | 1 | Manifold Head (Cylinder) HP73-1512C                 |
| 36 | HP76-1507A      | 6 | 'O' Ring, Check Valve                               |
| 37 | HP75-76-1507A   | 6 | Check Valve Assly                                   |
| 38 | HP76-1507A      | 6 | 'O' Ring Valve Plug                                 |
| 39 | HP73-1507A      | 6 | Valve Plug (Check)                                  |
| 40 | HP78-1507A      | 1 | Outlet Plug, Manifold                               |
| 41 | HP79-1507A      | 1 | (Thermal Relief Valve) Outlet Plug – Manifold – New |
| 42 |                 | 8 | Washer  |
| 43 | HP80-1507A      | 8 | Bolt, Manifold                                      |
| 44 | HP35-1507A      | 1 | Screw, Knob Cap                                     |
| 45 | HP36-1507A      | 1 | Plastic Knob Cap/Pressure Adj. Handle               |
| 46 | HP37-1507A      | 1 | Pressure Adjusting Seat                             |
| 47 | HP38-1507A      | 1 | Pressure Adjusting Spring                           |
| 48 | HP34-1507A      | 1 | Spring Seat   |
| 49 |                 | 1 | Screw, Jam Nut                                      |
| 50 |                 | 1 | Pressure Jam Nut                                    |
| 51 | HP42-44-1507A   | 1 | Unloader Valve Assembly                             |
| 52 | HP37-1507A      | 1 | Valve Seat  |
| 53 | HP54-1507A      | 1 | 'O' Ring, Valve Seat                                |
| 54 |                 |   | Gasket, Unloader Valve Assly                        |
| 55 | HP45-1507A      | 1 | Detergent Injector Fitting – New                    |
| 56 | HP46-1507A      | 1 | 'O' Ring, Injector Fitting – New                    |
| 57 | HP47-1507A      | 1 | Ball, Injector Fitting – New                        |
| 58 | HP48-1507A      | 1 | Spring, Injector Fitting – New                      |
| 59 |                 | 1 | Plug, Easy Start                                    |
| 60 |                 | 1 | 'O' Plug Easy Start                                 |
| 61 |                 | 1 | Valve Core, Easy Start                              |
| 62 |                 | 1 | 'O' Ring, Valve Core, Easy Start                    |
| 63 |                 | 1 | Spring, Easy Start                                  |

|    |               |   |   |
|----|---------------|---|---|
| 64 | HP57-1507A    | 1 | Water Outlet Banjo Bolt                           |
| 65 | HP56-1507A    | 1 | 'O' Ring, Outlet Banjo Bolt                       |
| 66 | HP58-1507A    | 1 | 'O' Ring, Unloader Valve Housing                  |
| 67 | HP50-1507A    | 1 | Unloader Valve Housing/Water Outlet Tee Connector |
| 68 | HP58-1507A    | 1 | 'O' Ring, Outlet Checking Valve                   |
| 69 | HP59-1507A    | 1 | Outlet Checking Valve                             |
| 70 | HP60-1507A    | 1 | Spring, Outlet Checking Valve                     |
| 71 | HP56-1507A    | 2 | 'O' Ring, Outlet Fitting                          |
| 72 | HP-QC Outlet  | 1 | Quick Disconnect Outlet Fitting                   |
| 73 | HP67-1507A    | 1 | Gasket, Bypass Housing/Inlet Tee Connection       |
| 74 | HP66-1507A    | 1 | Water Inlet Banjo Bolt                            |
| 75 | HP65-1507A    | 1 | 'O' Ring, Inlet Banjo Bolt                        |
| 76 | HP64-1507A    | 1 | Bypass Housing                                    |
| 77 | HP68-1507A    | 1 | Swivel Nut, Inlet Connector (Link-IT)             |
| 78 | HP66-1507A    | 1 | Body, Inlet Connector (Link-IT)                   |
| 79 | HP70-1507A    | 1 | Filter Washer, Inlet Connector                    |
| 80 | HP34-1507A    | 1 | Upper Seat, Adjusting Spring                      |
| 81 | HP27-37-1507A | 1 | Plunger Sealing Kit (Set of 3)                    |
| 82 | HP35-44-1507A | 1 | Adjustable Pressure Regulator                     |
| 83 | HP58-60-1507A | 1 | QD and Chemical Injector                          |
| 84 | HP64-70-1507A | 1 | Bypass Housing Assly (Water Inlet Assly)          |