

HOFFMANN POWER PRODUCTS

PARTS LIST 2014

HOFFMANN GENERATOR

H9000E

9HG/E



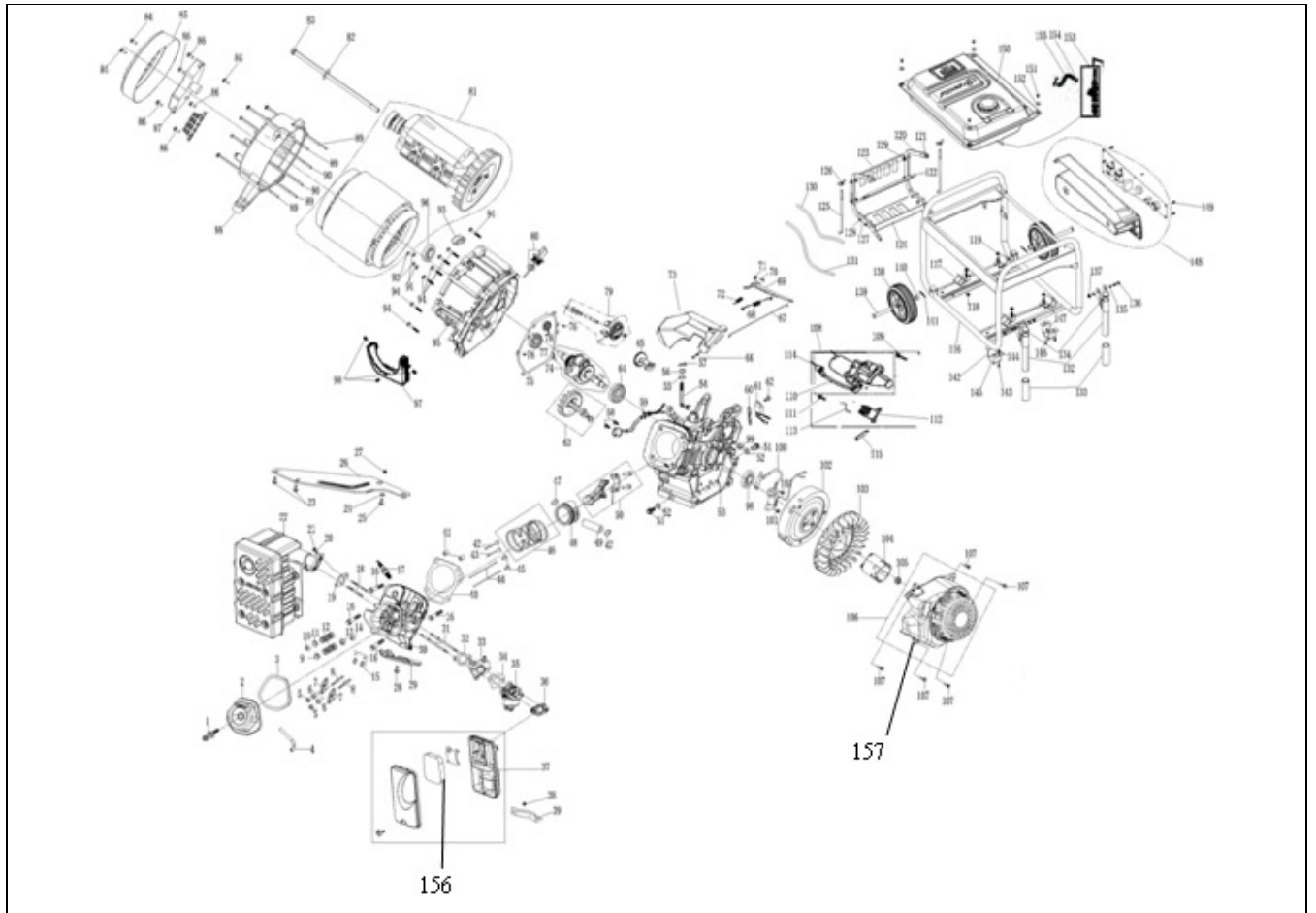
ALL PARTS ARE SUBJECT TO STANDARD HOFFMANN TERMS AND CONDITIONS OF SALE 2010

Replacement parts are not manufactured, sold or warranted by O.E.M's and any part numbers and or descriptions are used for identification purposes only.

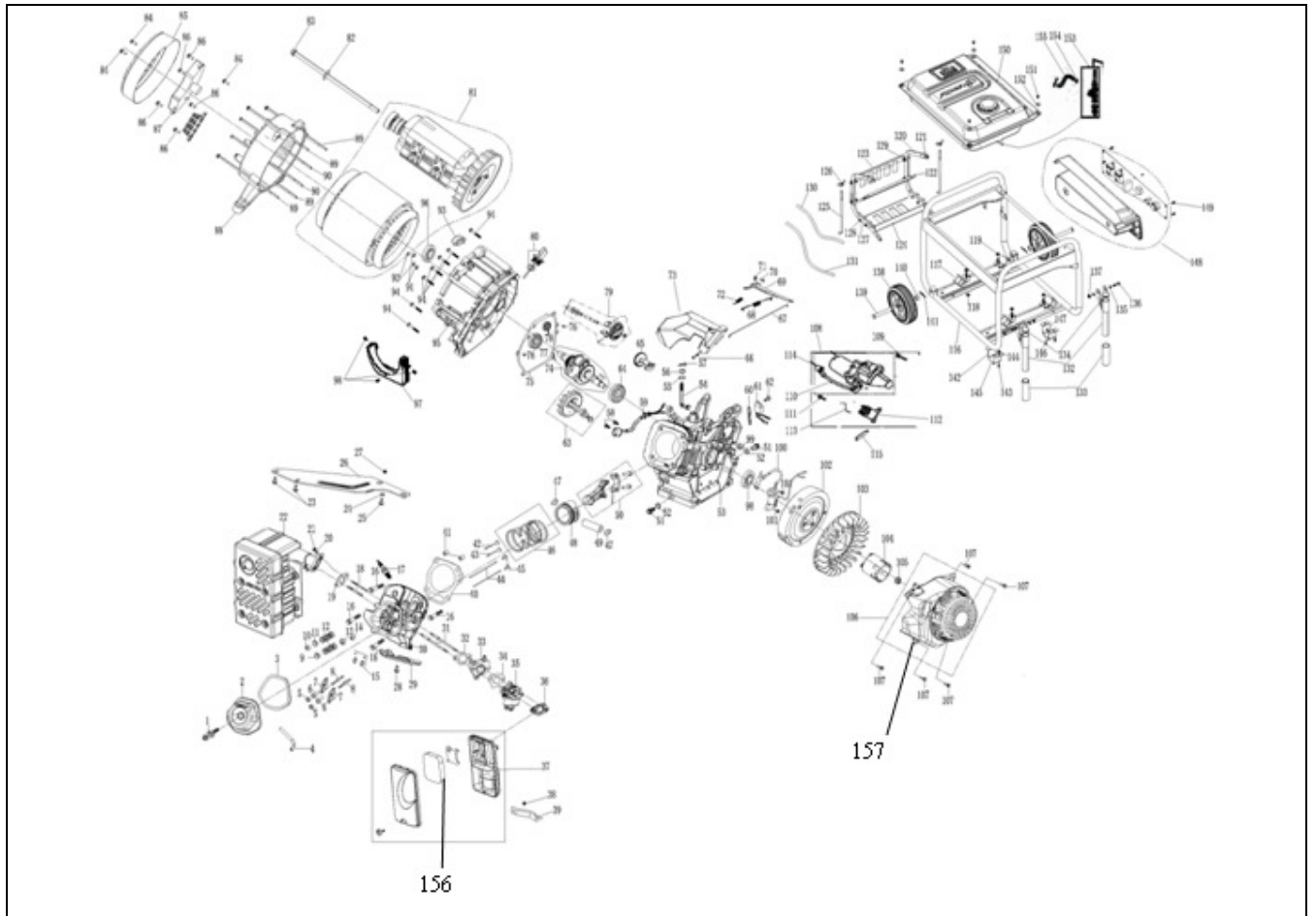
Manufacturers names, numbers and descriptions are used for reference purposes only and it is not implied that any part listed is the product of the manufacturers.

All pictures and drawings are for reference purposes only; any specifications appearing in any documents emanating from The Company are approximate only and are subject to modifications without notice.

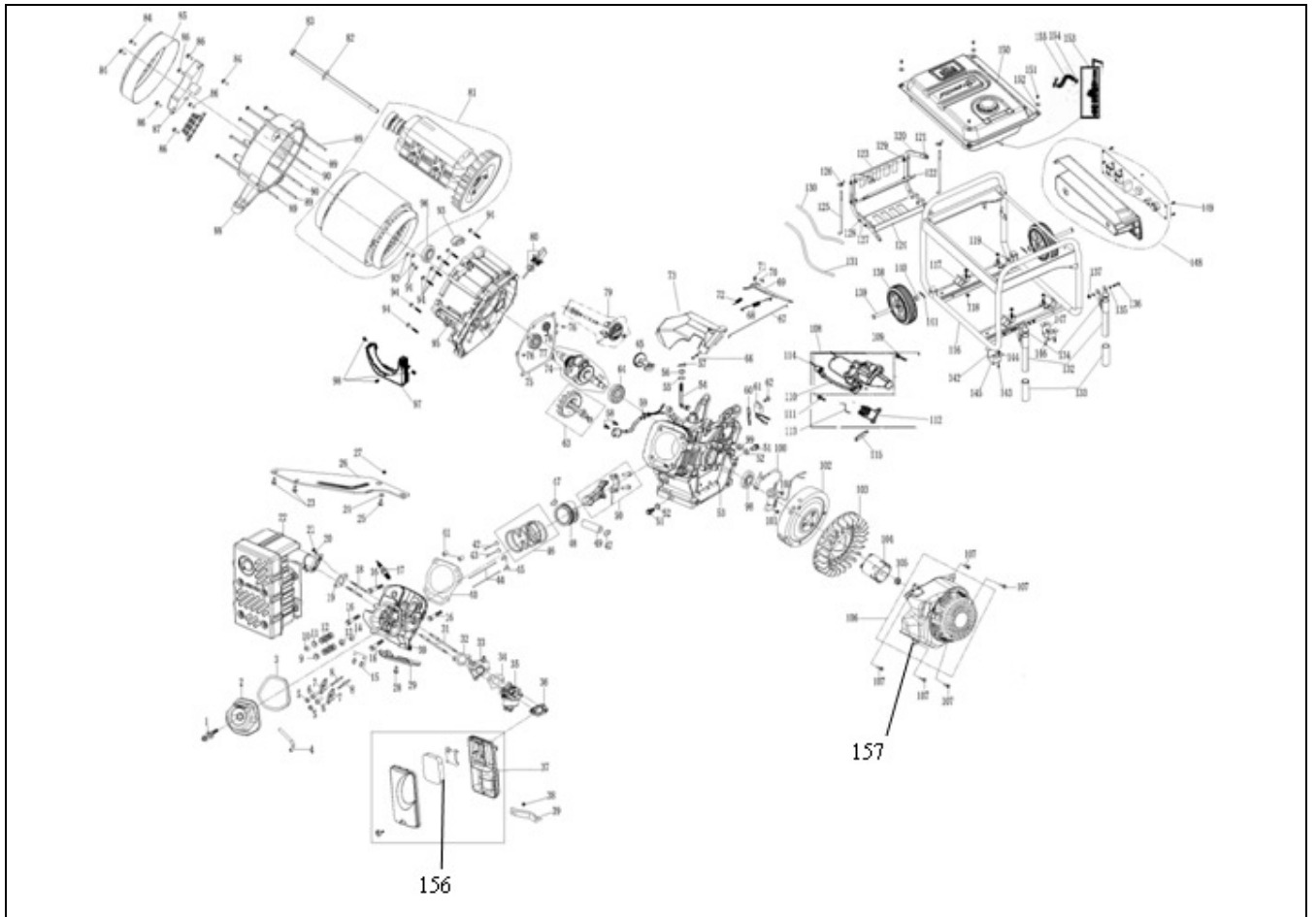
All rights reserved, material contained in this publication for which copyright is acknowledged. No part of this publication may be reproduced or transmitted in any form or by any means without written permission of the copyright holder. Copyright Hoffmann International©2012.



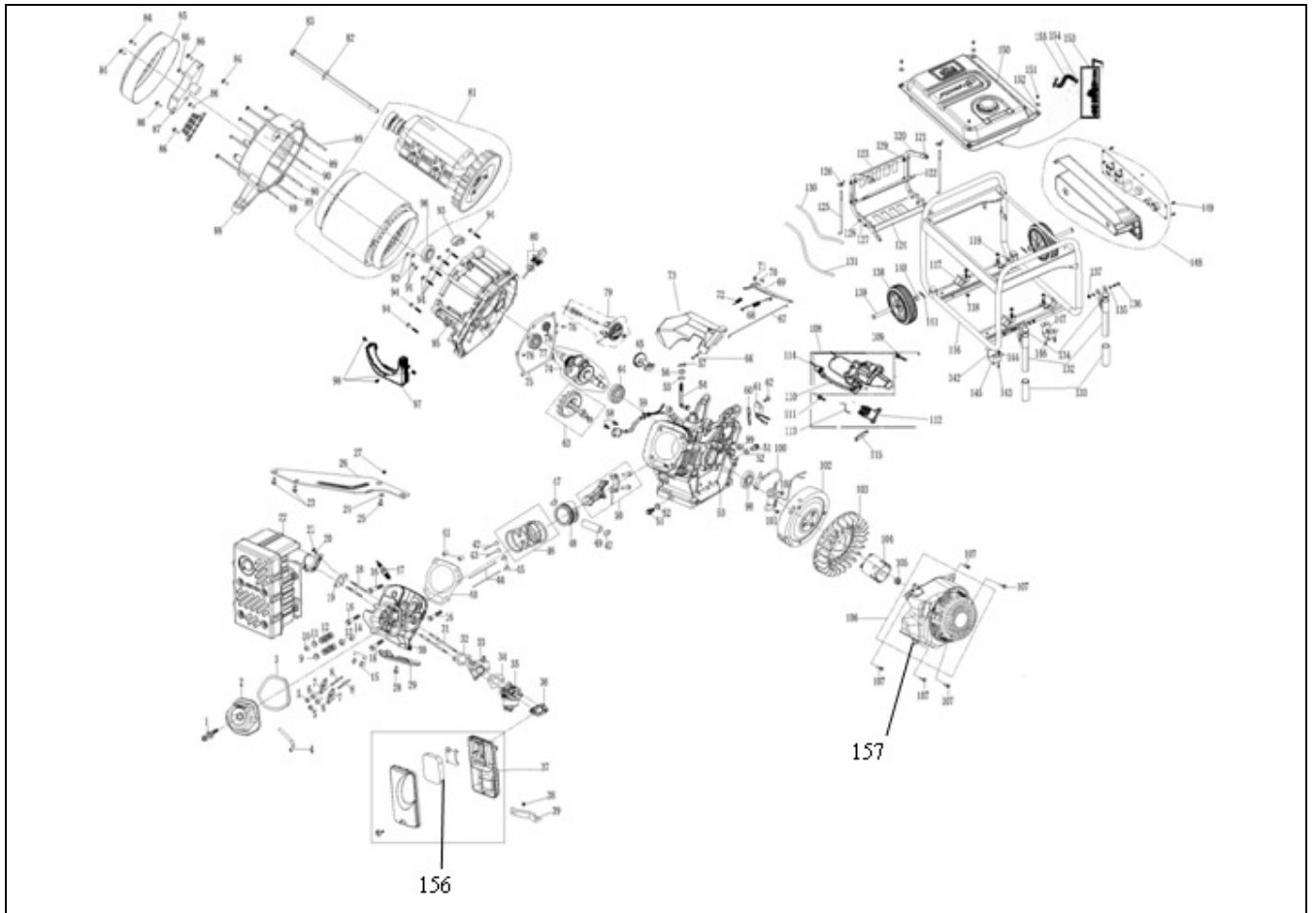
No	Description	QTY.	Part No.
1	Bolt, Cycl Head Assy		
2	Cover Comp. Head		
3	Pkg. Head Cover 1.5mm	20	9HG-12002
4	Waste Gas Tube		
5	Nut, Pivot M6		
6	Nut, Pivot Adj M6 Hex Nut		
7	Arm, Valve Rocker		9HG-14431
8	Pivot Stud		
9	Retainer, In. Valve Spring		
10	Rotator, Exh Valve		
11	Retainer, Exh Valve Spring		
12	Valve Spring		
13	Retainer, In. Valve Spring		
14	Stem Seal, In. Valve		
15	Limit Position Panel		
16	Bolt Flange M10X80		
17	Spark Plug NGK BP6ES		9HG-15010
18	Bolt, Stud M8X48.5		
19	Muffler Gasket		9HG-18010
20	Spring Washer		



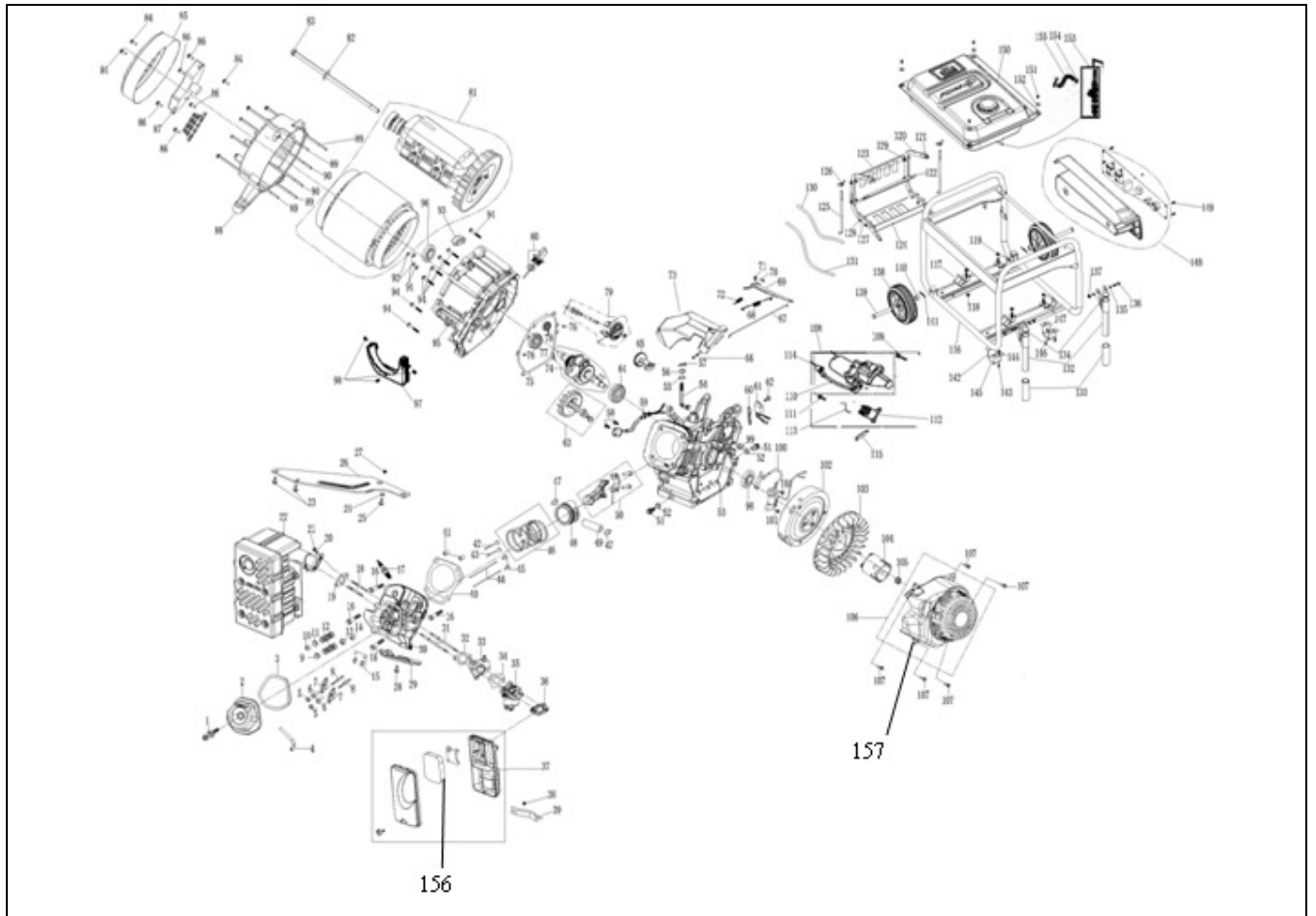
21	Hex Nut M8		
22	Comp. Muffler		9HG-53100
23	Flange Bolt M6X12		14Y-GB5787-86
24	Washer Φ8		
25	Flange Bolt M8X40		9HG-8X40
26	Supporting Leg, Muffler		
27	Flange Nut M8		5HG-M10800
28	Flange Bolt M6X12		14Y-GB5787-86
29	Wind Lead Cover		
30	Cycl Head (Bare)	10	9HG-12200
31	Bolt, Stud M6XM8X110		
32	Gasket, In Valve		
33	Insulator, Carb Comp		6HG-209002
34	Pkg, Carb		6HG-109003
35	Carburettor Assy		9HGE-17200
36	Air Cleaner		9HG-17004
37	Air Filter		9HG-14200
38	Flange Nut M6		GBT6177-86/6
39	Supporting Leg A/C		
40	Gasket, Cyln Head		9HG-12010
41	Dowel, Pin		



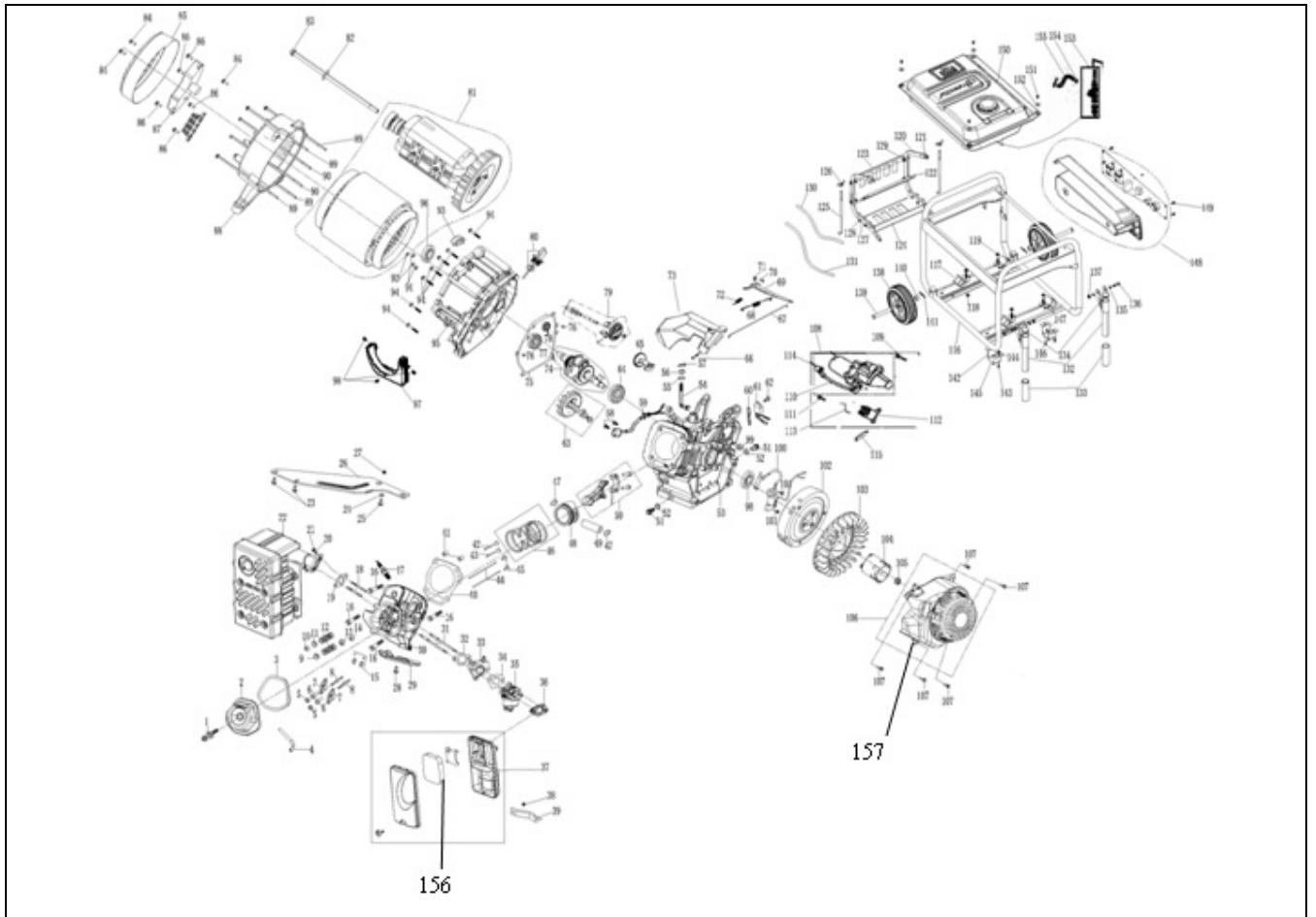
42	Exh Valve		9HG-14443
43	In Valve		9HG-14442
44	Rod, Push		
45	Lifter Valve		
46	Ring Set, Piston		9HG-13010
47	Clip Piston Pin		
48	Piston – 92 ^{mm}		9HG-13101
49	Pin Piston		
50	Conrod Assy		9HG-13200
51	Drain Plug		-13-02010003
52	Alum Washer		-13-02010004
53	Crankcase		9HGE-11100
54	Shaft, Governor Arm		
55	Gasket, Governor Arm		
56	Seal, Governor Arm		
57	Pin		
58	Flange Bolt M6X12		9HG-6X10
59	Oil Sensor		
60	Clamp, Pin Lock		
61	Alert Unit, Oil		14Y-09030000
62	Flange Bolt M6X12		9HG-6X10



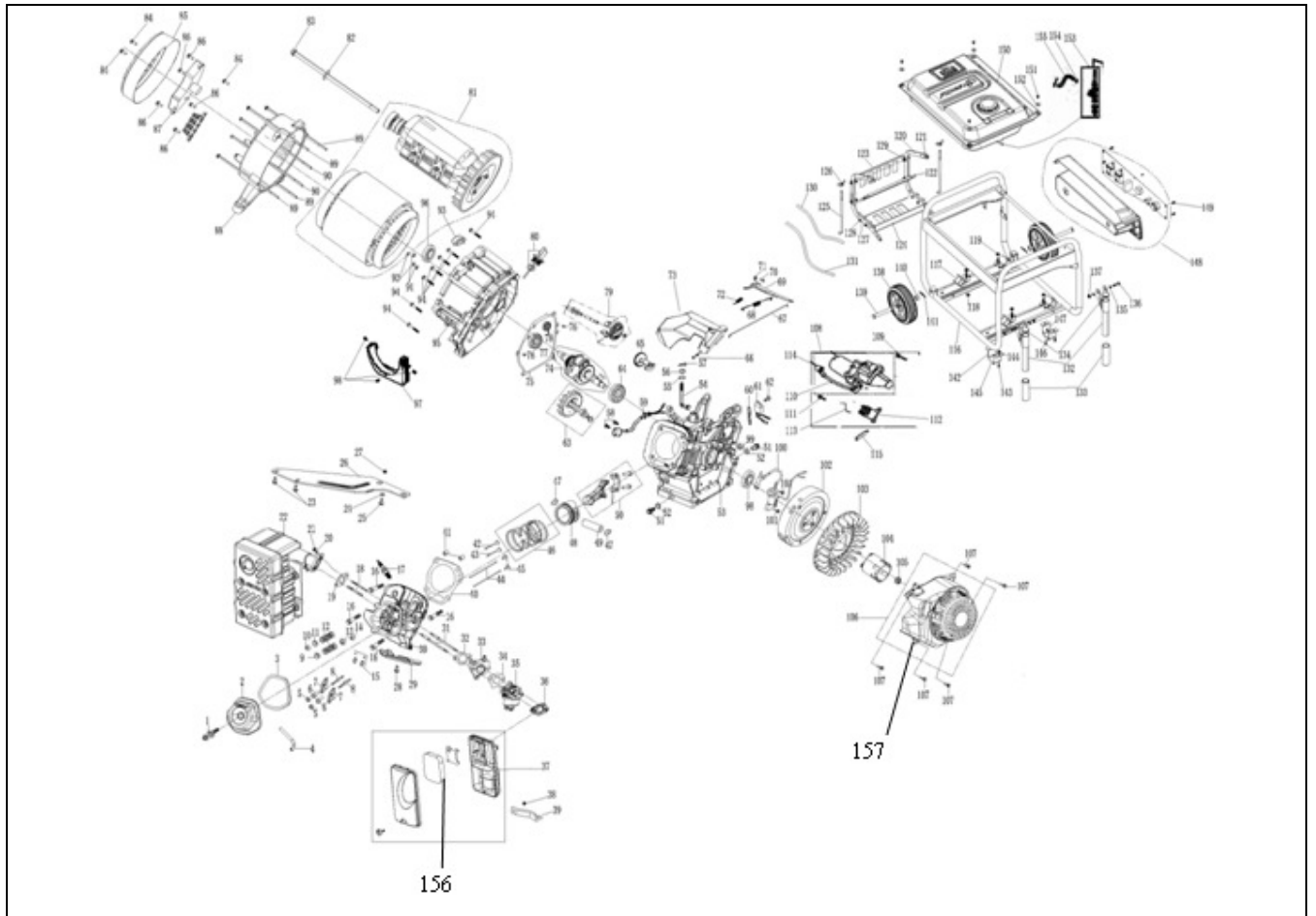
63	Cam Shaft Assy		9HG-14100
64	Bearing		9HG-6207-02
65	Balancer Shaft	4	9HG-13401
66	Flange Bolt		9HG-6X10
67	Governor Rod		
68	Adj Spring		
69	Governor Arm		
70	Bolt, Governor Arm		
71	Flange Nut		
72	Spring Throttle Return		
73	Control Assy		
74	Crank Assy		9HG-13300
75	Gasket, Crankcase Cover		9HG-11012
76	Dowel, Pin		
77	Bearing 6207		9HG-6207-02
78	Bearing 6202		9HG-6202-03
79	Governor Assy	10	(9HG-16010)
80	Dipstick		
81	Stator and Rotor	5	9HG-31000
82	Plate Washer		
83	Flange Bolt, Rotor M10X250		



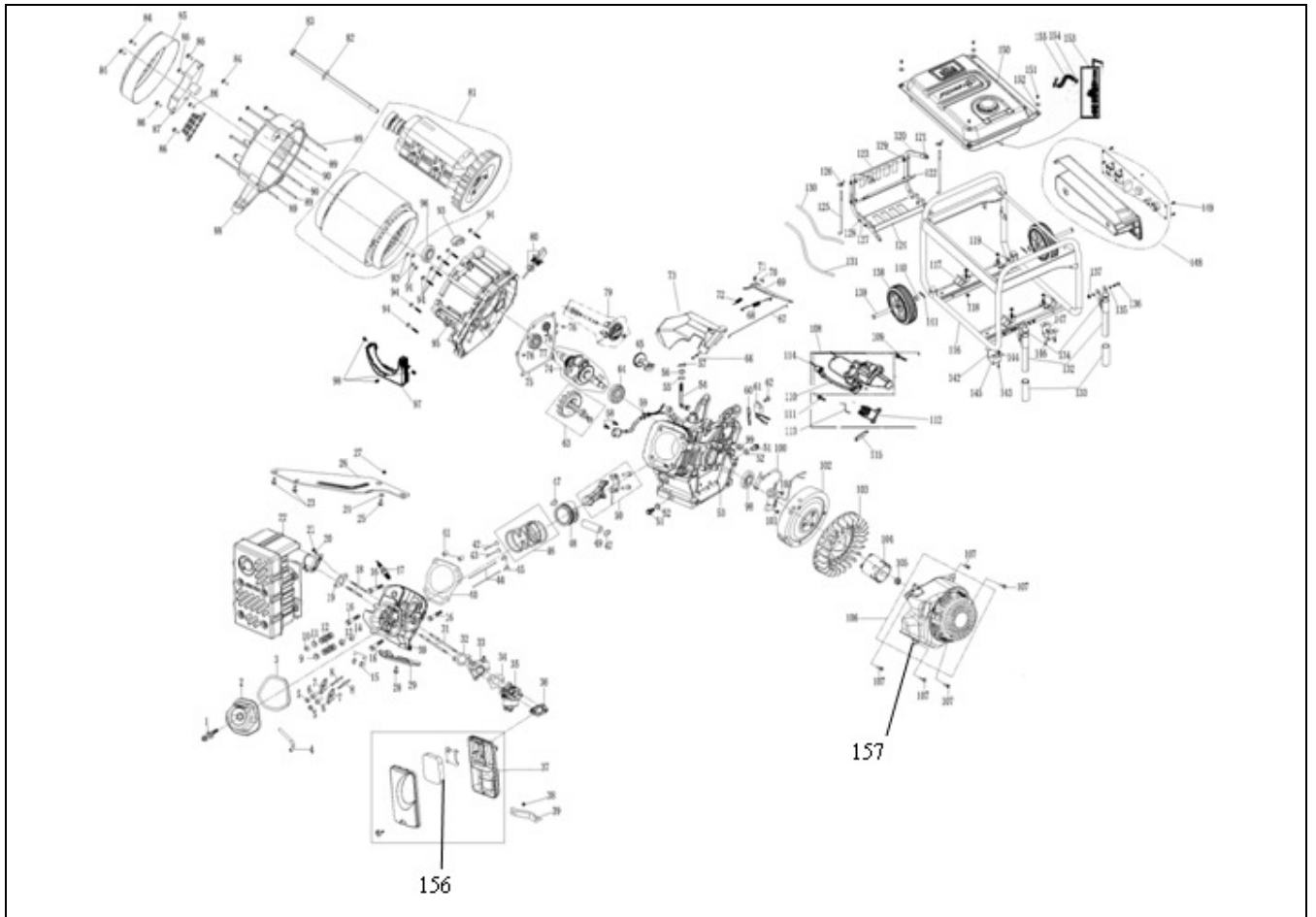
84	Flange Bolt M5X12		
85	End Cover		
86	Flange Bolt M5X16		
87	AVR 5kw		9HG-31700
88	Generator Stay		
89	Flange Bolt M6X1160		
90	Flange Bolt M5X198		
91	Ball Nut M5		
92	Spring Gasket		
93	Anti-Duct Rubber		
94	Flange Bolt		9HG-8X40
95	Cover, Crankcase		9HG-11200
96	Oil Seal		
97	Wind Lead Cover		
98	Flange Bolt M5X12		
99	Rubber Plate		
100	IG Coil Assy		
101	Flange Bolt		
102	Flywheel Comp		9HGE-15300
103	Cooling Fan		9HG-15004
104	Starting Cup		



105	Flange Nut M16		
106	Recoil Starter Assy		9HG-08010000
107	Flange Bolt M6X12		9HG-6X10
108	Starting Motor Assy		
109	Flange Bolt M8X32		9HG-8X32
110	Charging Coil AC20		
111	Flange Bolt M6X30		
112	Starting Relay		
113	Connecting Cord		
114	Cap. Relay		
115	Cord Fix Plate		
116	Frame Assy	5	9HG-51100
117	Bottom Rubber		
118	Flange Nut M8		
119	Flange Nut M10		
120	Battery Supporting Leg		
121	Flange Bolt		
122	Battery Plate		
123	Battery Cover		
124	Equipment Plate		
125	Bolt M6X215		



126	Nut		
127	Frame Washer		
128	Flange Bolt		
129	Flange Nut		
130	Nega Cord, Battery		
131	Positive Cord, Battery		
132	Handle Assy		
133	Plastic Handle Set		
134	Rubber Handle Tube		
135	Washer		
136	Flange Bolt M8X60		
137	Flange Nut M8		
138	Wheel	10	9HG-51310
139	Cotter Pin		
140	Grommet		
141	Clamp		
142	Supporting Assy		
143	Flange Bolt M8X16		
144	Flange Nut M8		
145	Rubber Gasket, Supporting		
146	Flange Bolt M6X20		



147	Flange Nut M6		GBT6177-86/6
148	Control Panel Assy	5	9HG-52000
149	Flange Bolt M6X20		
150	Fuel Tank Assy	10	9HG-54100
151	Flange Bolt M6X25 (tank)		9HG-6X25
152	Washer, Tank Fuel		9HG-G7A2-000B
153	Fuel Switch		
154	Clamp		
155	Fuel Tube		
156	Air Filter Element		9HG-14203
157	Fan Cover		9HG-0800001