

# HOFFMANN POWER PRODUCTS

## PARTS LIST 2014

### HOFFMANN GENERATOR

#### H6000E



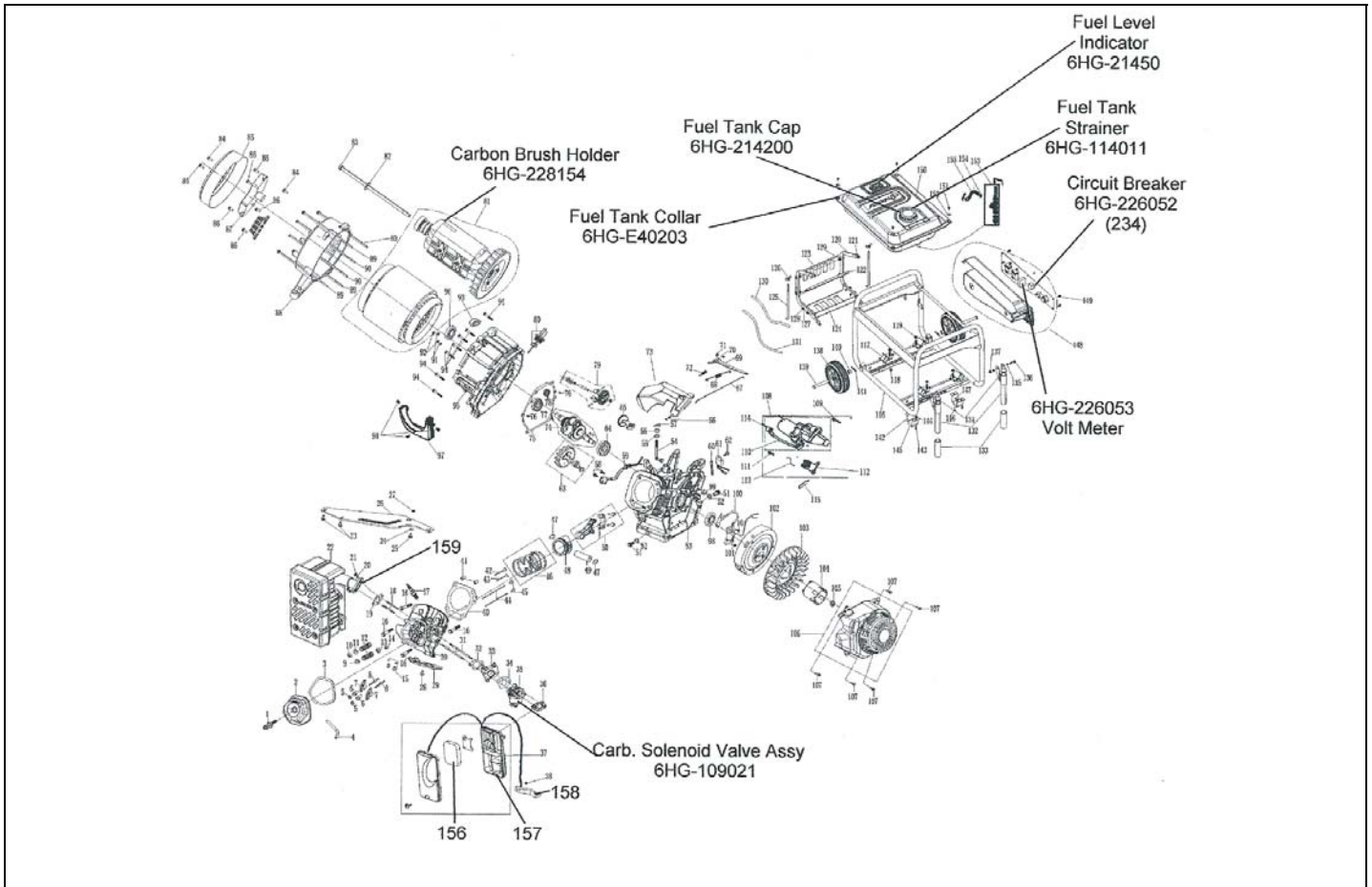
#### ALL PARTS ARE SUBJECT TO STANDARD HOFFMANN TERMS AND CONDITIONS OF SALE 2010

Replacement parts are not manufactured, sold or warranted by O.E.M's and any part numbers and or descriptions are used for identification purposes only.

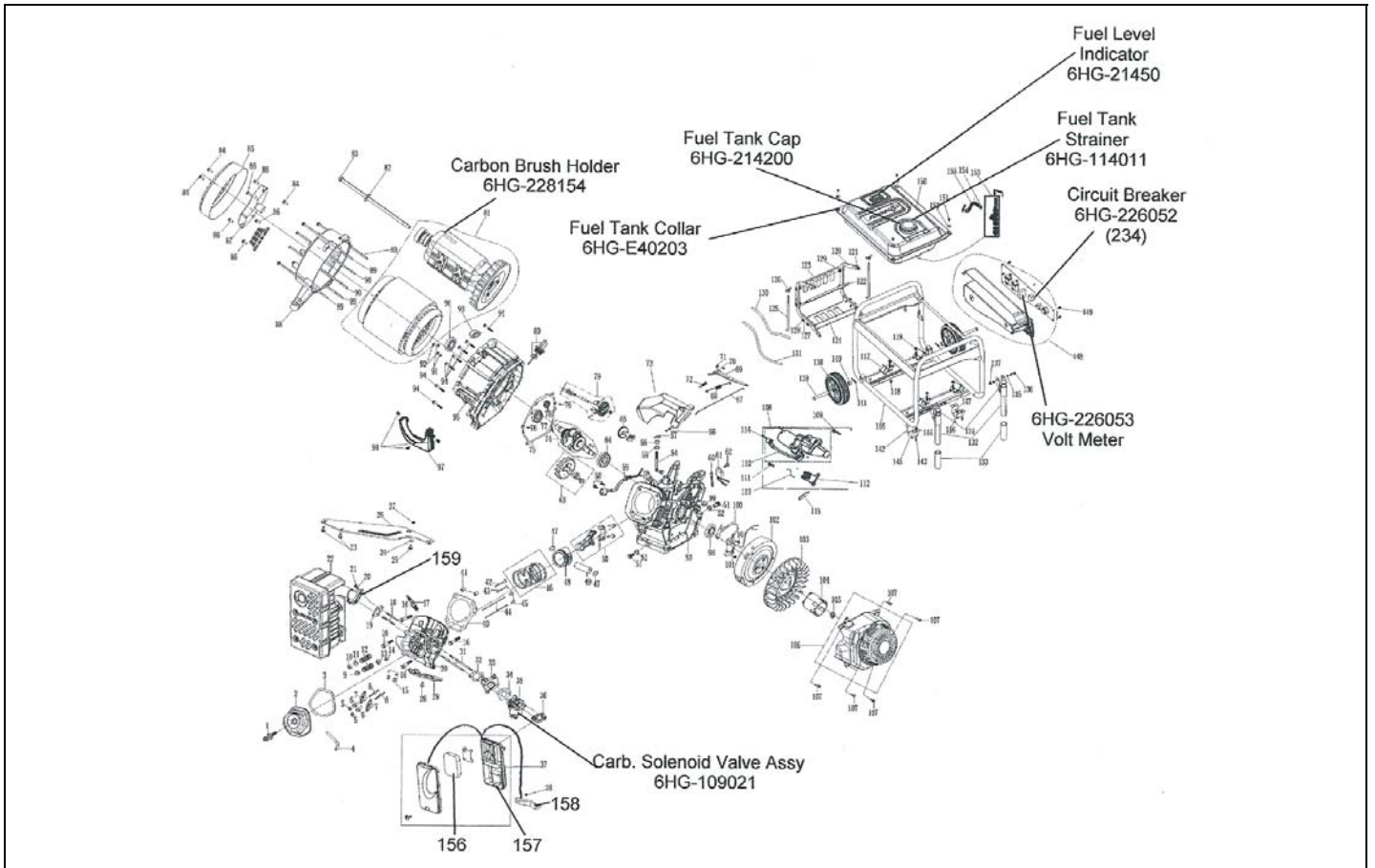
Manufacturers names, numbers and descriptions are used for reference purposes only and it is not implied that any part listed is the product of the manufacturers.

All pictures and drawings are for reference purposes only; any specifications appearing in any documents emanating from The Company are approximate only and are subject to modifications without notice.

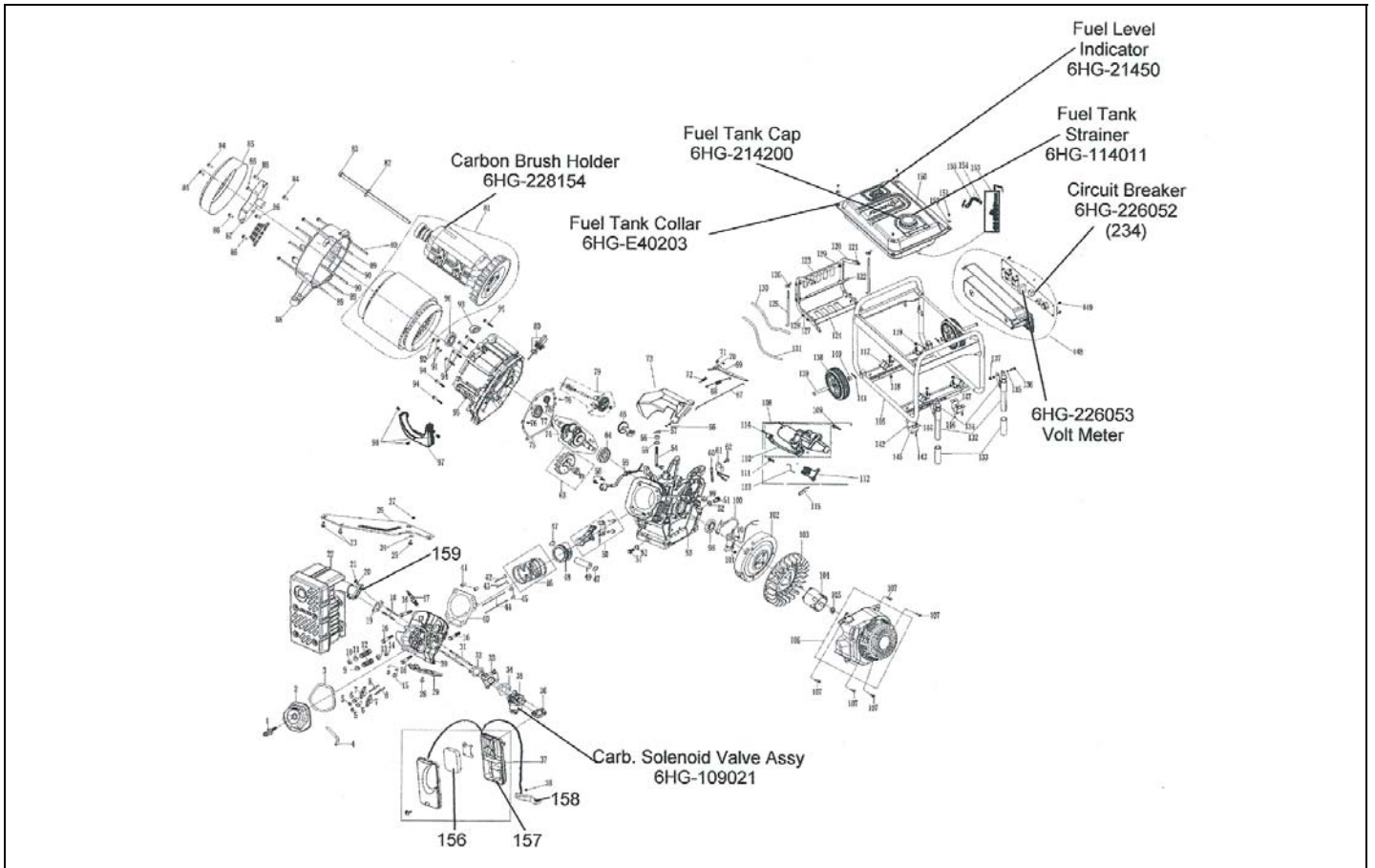
All rights reserved, material contained in this publication for which copyright is acknowledged. No part of this publication may be reproduced or transmitted in any form or by any means without written permission of the copyright holder. Copyright Hoffmann International©2012.



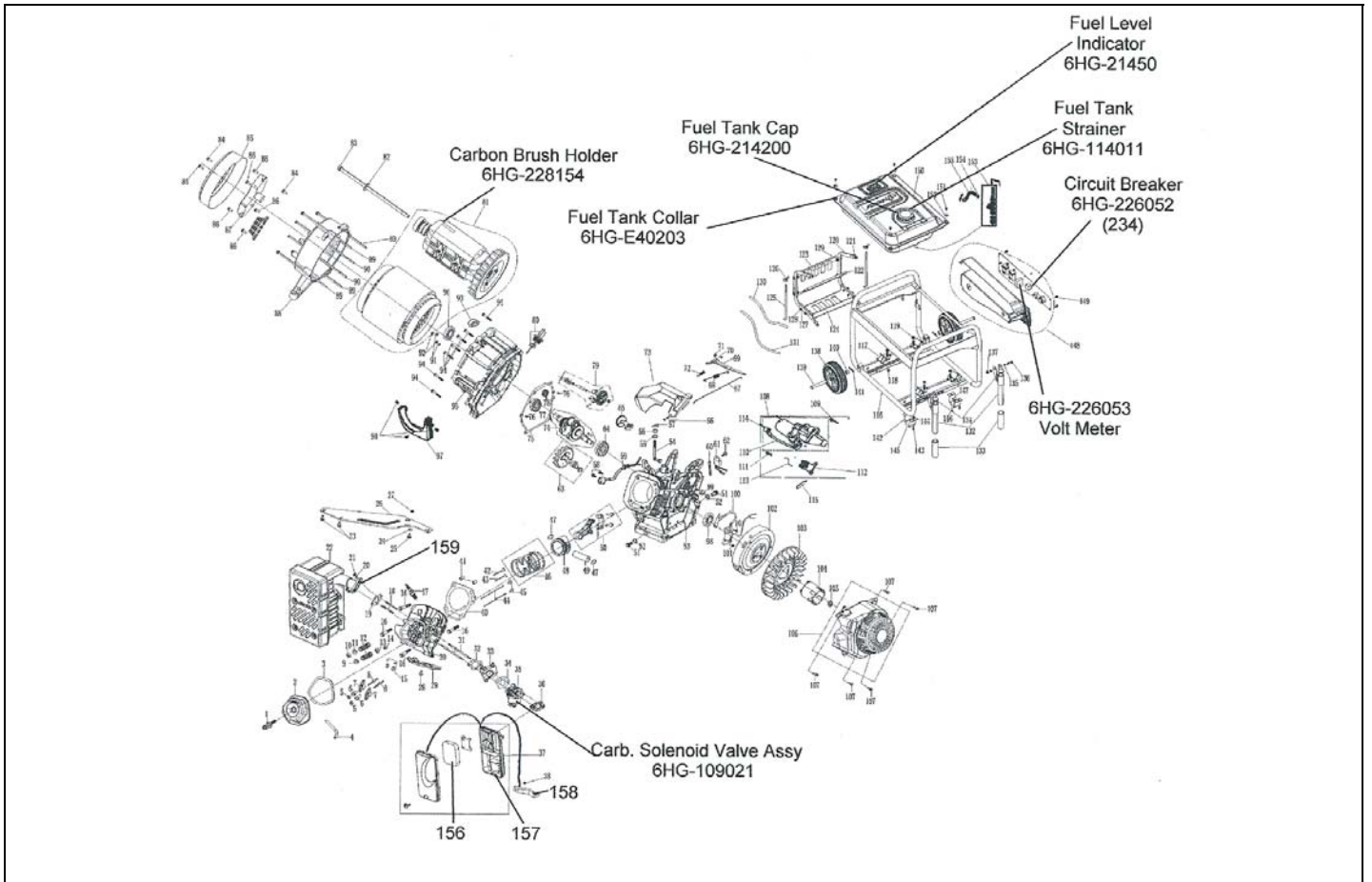
| No | Description                       | QTY. | Part No.       |
|----|-----------------------------------|------|----------------|
| 1  | Bolt, Cycl Head Assy              |      |                |
| 2  | Cover Comp. Head                  |      |                |
| 3  | Pkg. Head Cover 1.5 <sup>mm</sup> | 20   |                |
| 4  | Breather Tube                     |      | 6HG-102247-706 |
| 5  | Nut, Pivot M6                     |      |                |
| 6  | Nut, Pivot Adj M6 Hex Nut         |      |                |
| 7  | Arm, Valve Rocker                 | 20   |                |
| 8  | Bolt Pivot M6XM8X531              |      |                |
| 9  | Retainer, In.Valve Spring         |      |                |
| 10 | Rotator, Exh Valve                |      |                |
| 11 | Retainer, Exh Valve Spring        |      |                |
| 12 | Valve Spring                      |      |                |
| 13 | Retainer, In. Valve Spring        |      |                |
| 14 | Seal, In Valve                    |      |                |
| 15 | Limit Position Panel              |      |                |
| 16 | Bolt Flange M10X80                |      |                |
| 17 | Spark Plug NGK BP6ES              |      |                |
| 18 | Bolt, Stud M8X48.5                |      |                |
| 19 | Gasket Muffler                    |      | 6HG-213008     |
| 20 | Spring Washer                     |      |                |



|    |                         |    |                        |
|----|-------------------------|----|------------------------|
| 21 | Hex Nut M8              |    |                        |
| 22 | Comp. Muffler           |    | 6HG-213100             |
| 23 | Flange Bolt M6X12       |    | 14Y-GB5787-86          |
| 24 | Washer Φ8               |    |                        |
| 25 | Flange Bolt M8X40       |    |                        |
| 26 | Supporting Leg, Muffler |    |                        |
| 27 | Flange Nut M8           |    |                        |
| 28 | Flange Bolt M6X12       |    | 14Y-GB5787-86          |
| 29 | Wind Lead Cover         |    |                        |
| 30 | Cycl Head               | 10 |                        |
| 31 | Bolt, Stud M6XM8X110    |    |                        |
| 32 | Gasket, In. Valve       |    | 6HG-109001             |
| 33 | Insulator, Carb Comp    |    | 6HG-209002             |
| 34 | Pkg. Carb               |    | 6HG-109003             |
| 35 | Carburettor Assy        |    | 6HG-209100/6HGE-209100 |
| 36 | Gasket Air Filter       |    | 6HG-112001             |
| 37 | Air Filter              |    | 6HG-115000/HSE         |
| 38 | Flange Nut M6           |    | GBT6177-86/6           |
| 39 | Supporting Leg A/C      |    |                        |
| 40 | Gasket, Cyl Head        |    |                        |
| 41 | Dowel, Pin              |    |                        |

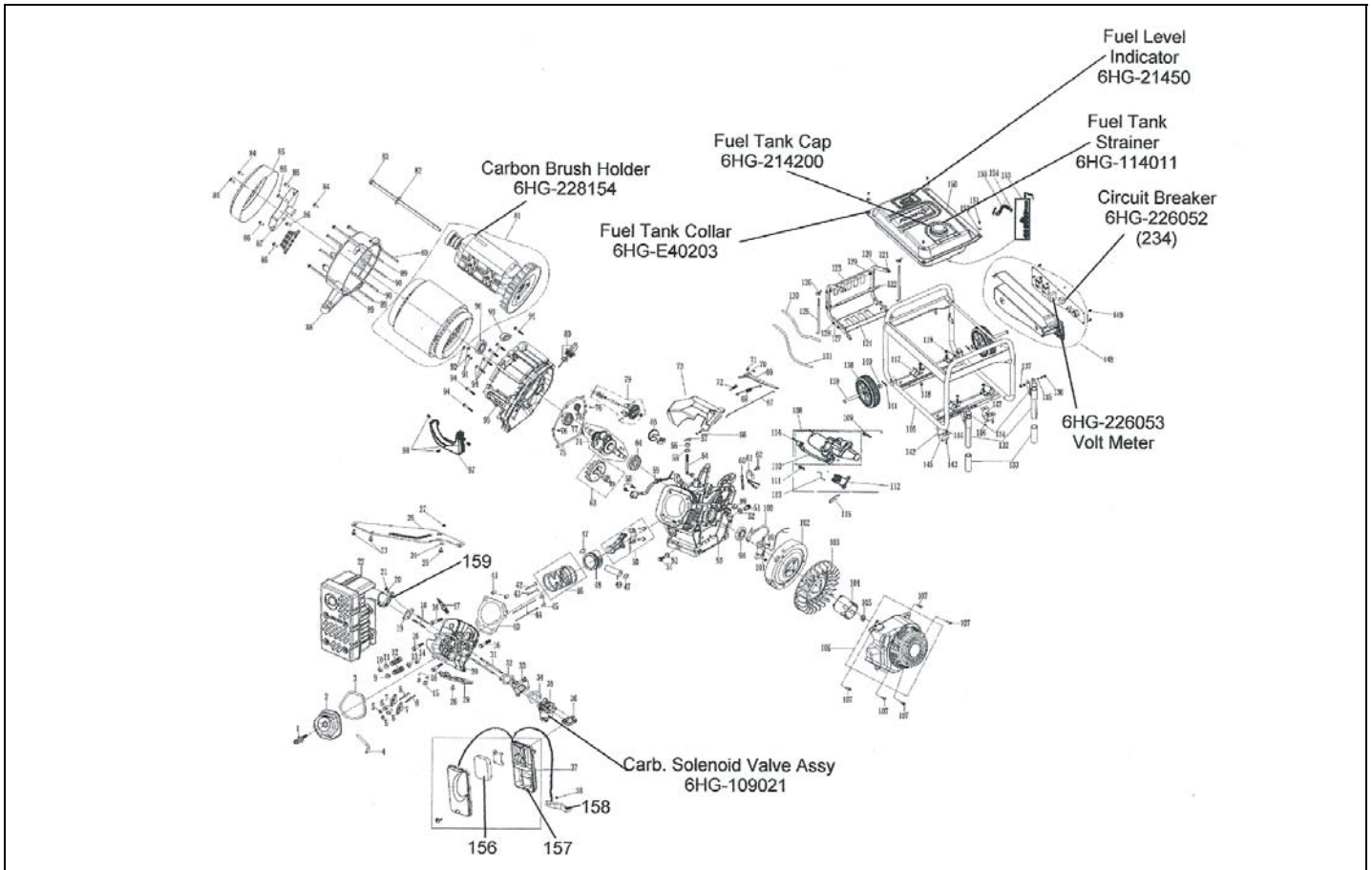


|    |                      |  |              |
|----|----------------------|--|--------------|
| 42 | Exh. Valve           |  |              |
| 43 | In. Valve            |  |              |
| 44 | Rod, Push            |  |              |
| 45 | Lifter Valve         |  |              |
| 46 | Ring Set, Piston     |  |              |
| 47 | Clip Piston Pin      |  |              |
| 48 | Piston               |  |              |
| 49 | Pin Poston           |  |              |
| 50 | Conrod Assy          |  |              |
| 51 | Drain Plug           |  | 13-02010003  |
| 52 | Alum Washer          |  | 13-02010004  |
| 53 | Crankcase            |  | 6HG-02010000 |
| 54 | Shaft, Governor Arm  |  |              |
| 55 | Gasket, Governor Arm |  |              |
| 56 | Seal, Governor Arm   |  |              |
| 57 | Pin                  |  |              |
| 58 | Flange Bolt M6X10    |  | 9HG-6X10     |
| 59 | Oil Sensor           |  |              |
| 60 | Clamp, Pin Lock      |  |              |
| 61 | Alert Unit, Oil      |  | 14Y-09030000 |
| 62 | Flange Bolt M6X10    |  | 9HG-6X10     |

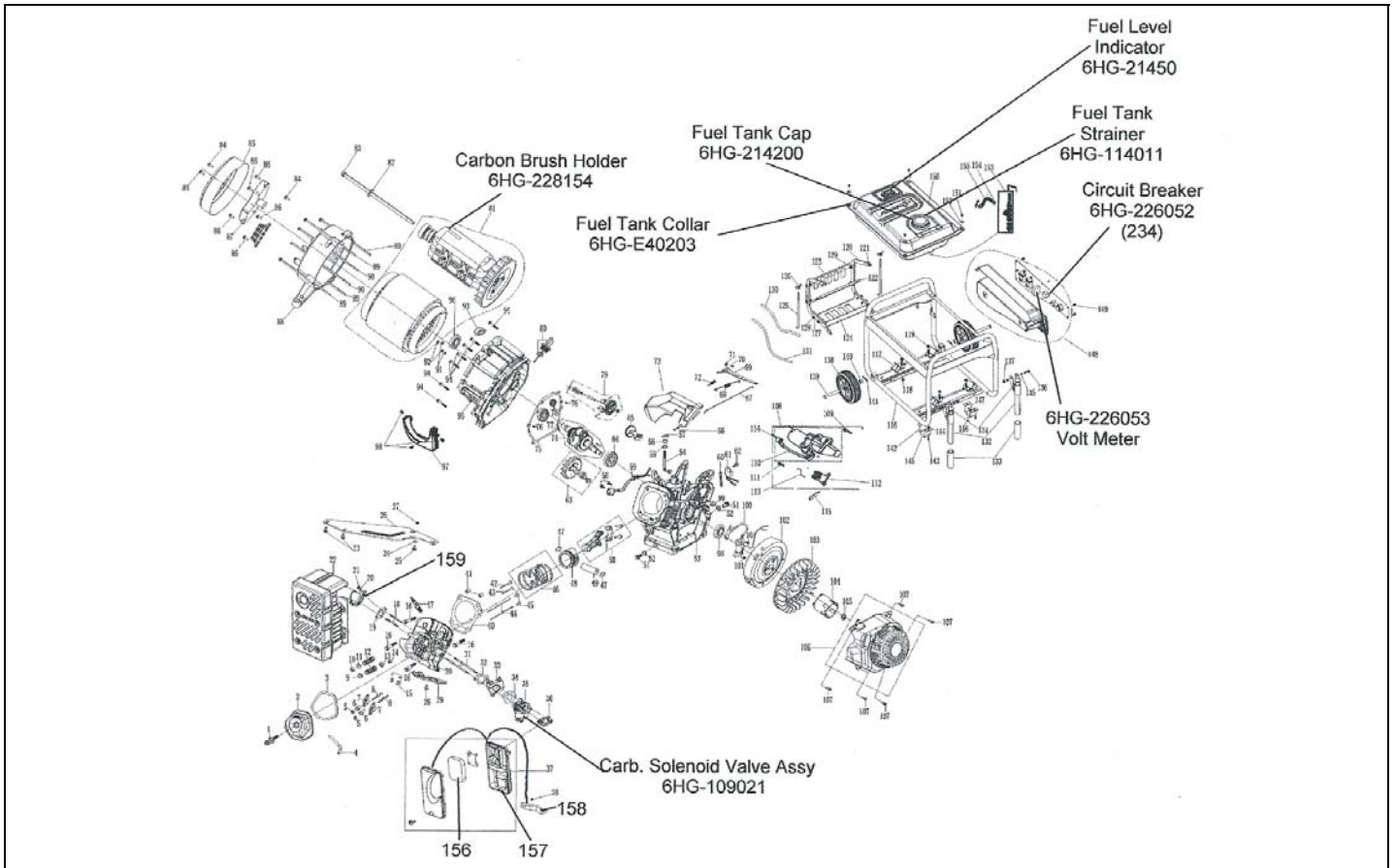


|    |  |    |   |
|----|--|----|---|
| 63 | Cam Shaft Assy                                 | 10 |   |
| 64 | Bearing  |    |   |
| 65 | Governor Shaft                                 | 4  |   |
| 66 | Flange Bolt                                    |    |   |
| 67 | Governor Rod                                   |    |   |
| 68 | Adj Spring                                     |    |   |
| 69 | Governor Arm                                   |    |   |
| 70 | Bolt, Governor Arm                             |    |   |
| 71 | Flange Nut                                     |    |   |
| 72 | Spring Throttle Return                         |    |   |
| 73 | Control Assy (Throttle)                        |    | 6HG-07100000                                |
| 74 | Crank Assy                                     |    | 6HG-104160                                  |
| 75 | Gasket Crankcase                               |    | 6HG-103002                                  |
| 76 | Dowel, Pin                                     |    |   |
| 77 | Bearing 6207                                   |    |   |
| 78 | Bearing 6207                                   |    |   |
| 79 | Governor Assy                                  | 10 |   |
| 80 | Dipstick                                       |    | 6HG-204001                                  |
| 81 | Stator and Rotor<br>Stator and Rotor 3 Ph/6KVA |    | 6HG-Stator & Rotor<br>6HGE/3P-ST/Rot }<br>} |
| 82 | Plate Washer                                   |    |   |

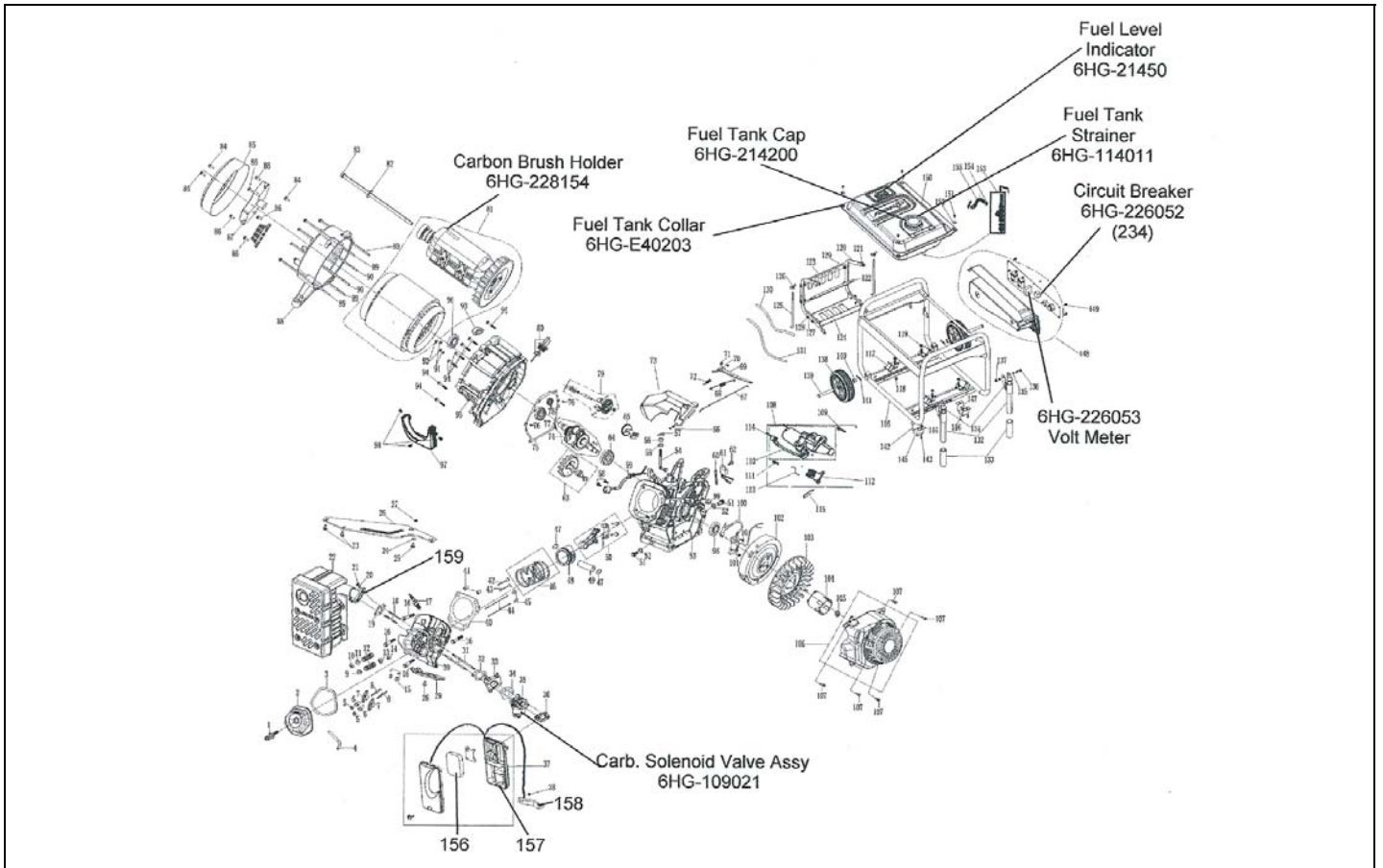




|     |                            |                                       |   |
|-----|----------------------------|---------------------------------------|---|
| 83  | Flange Bolt, Rotor M10X265 | M10X265-6HG-80110-0310<br>6HG-M10X265 | } |
| 84  | Flange Bolt M5X12          |                                       |   |
| 85  | End Covers                 | 6HG-ALT/RCover                        |   |
| 86  | Flange Bolt M5X16          |                                       |   |
| 87  | AVR 5kw                    | 6HG/3P-228200/6HG-228200              |   |
| 88  | Generator Stay             |                                       |   |
| 89  | Flange Bolt M6X1160        |                                       |   |
| 90  | Flange Bolt M5X198         |                                       |   |
| 91  | Ball Nut M5                |                                       |   |
| 92  | Spring Gasket              |                                       |   |
| 93  | Anti-Duct Rubber           |                                       |   |
| 94  | Flange Bolt                |                                       |   |
| 95  | Cover, Crankcase           | 6HG-203001                            |   |
| 96  | Oil Seal                   |                                       |   |
| 97  | Wind Lead Cover            |                                       |   |
| 98  | Flange Bolt M5X12          |                                       |   |
| 99  | Rubber Plate               |                                       |   |
| 100 | IG Coil Assy               | 6HG-09040000/C                        |   |
| 101 | Flange Bolt                |                                       |   |

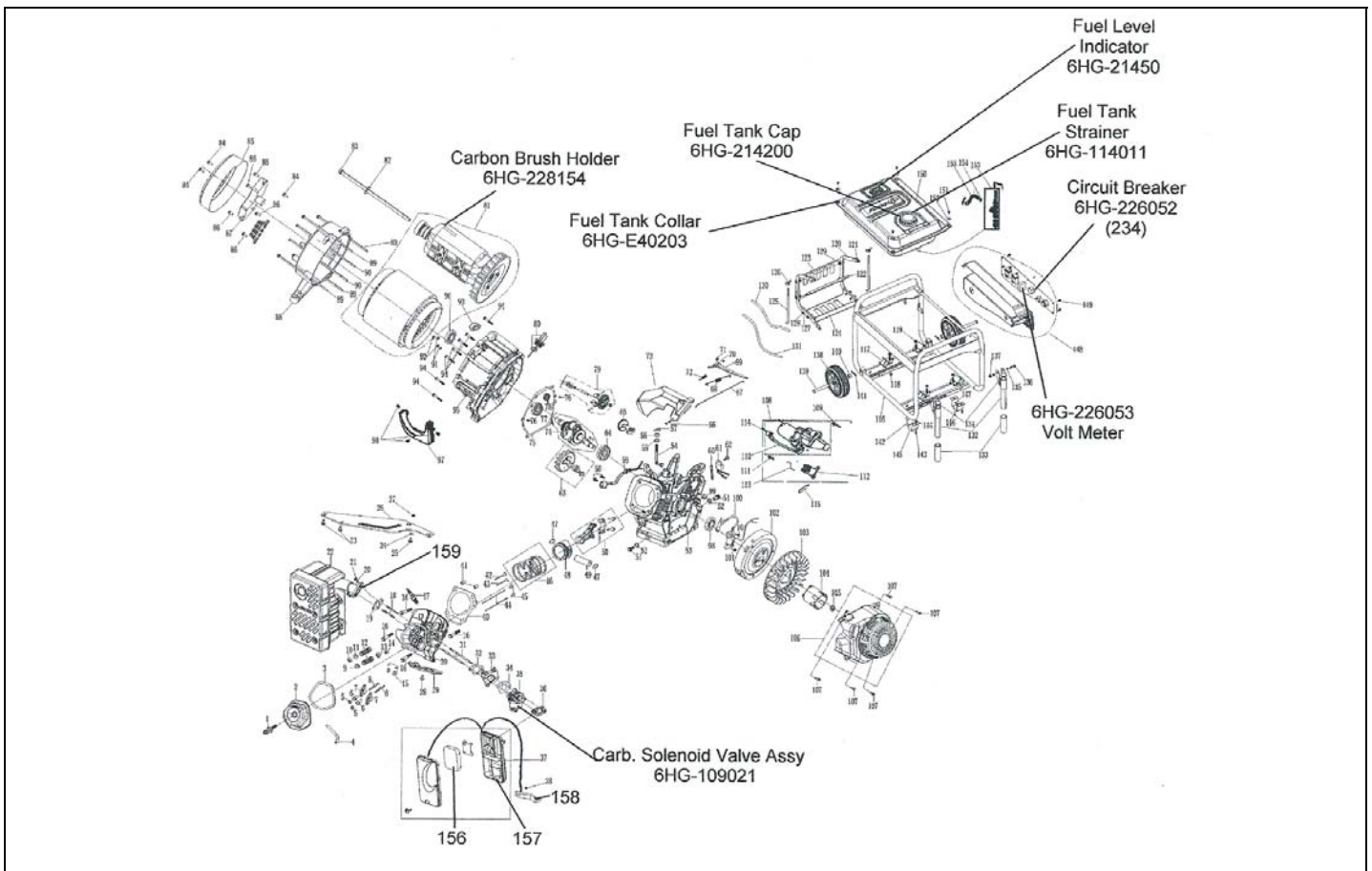


|     |   |                                     |
|-----|---|-------------------------------------|
| 102 | Flywheel Comp                                 | 6HGE-09050000                       |
| 103 | Cooling Fan                                   | 6HG-228155                          |
| 104 | Starting Cup                                  |                                     |
| 105 | Flange Nut M16                                | 8-08000002                          |
| 106 | Recoil Starter Assy                           | 6HG-08010000                        |
| 107 | Flange Bolt M6X10                             | 9HG-6X10                            |
| 108 | Starting Motor Assy                           | 6HG-116100/6HG-209100/6HGE-09060000 |
| 109 | Flange Bolt M8X32                             |                                     |
| 110 | Charging Coil AC20                            | 6HGE-09070000                       |
| 111 | Flange Bolt M6X30                             |                                     |
| 112 | Starter – Solenoid – 6HG-116200/6HGE-09080000 |                                     |
| 113 | Connecting Cord                               |                                     |
| 114 | Cap. Relay                                    |                                     |
| 115 | Cord Fix Plate                                |                                     |
| 116 | Frame Assy                                    | 6HG-1000620                         |
| 117 | Bottom Rubber                                 |                                     |
| 118 | Flange Nut M8                                 |                                     |
| 119 | Flange Nut M10                                |                                     |
| 120 | Battery Supporting Leg                        |                                     |
| 121 | Flange Bolt                                   |                                     |



|     |                        |    |            |
|-----|------------------------|----|------------|
| 122 | Battery Plate          |    |            |
| 123 | Battery Cover          |    |            |
| 124 | Equipment Plate        |    |            |
| 125 | Bolt M6X215            |    |            |
| 126 | Nut                    |    |            |
| 127 | Frame Washer           |    |            |
| 128 | Flange Bolt            |    |            |
| 129 | Flange Nut             |    |            |
| 130 | Nega Cord. Battery     |    | 6HG-229151 |
| 131 | Positive Cord. Battery |    | 6HG-229152 |
| 132 | Handle Assy            |    |            |
| 133 | Plastic Handle Set     |    |            |
| 134 | Rubber Handle Tube     |    |            |
| 135 | Washer                 |    |            |
| 136 | Flange Bolt M8X60      |    |            |
| 137 | Flange Nut M8          |    |            |
| 138 | Kit Assy               | 10 | 6HG-E50400 |
| 139 | Cotter Pin             |    |            |
| 140 | Grommet                |    |            |
| 141 | Clamp                  |    |            |
| 142 | Supporting Assy        |    |            |





|     |                                  |  |                        |
|-----|----------------------------------|--|------------------------|
| 143 | Flange Bolt M8X16                |  |                        |
| 144 | Flange Nut M8                    |  |                        |
| 145 | Rubber Mounting – L/H-6HG-227351 |  |                        |
| 146 | Mounting Rubber R/H – 6HG-227352 |  |                        |
| 147 | Flange Nut M6                    |  |                        |
| 148 | Control Panel Assy               |  | 6HGE-226000/6HG-226000 |
| 149 | Flange Bolt M6X20                |  |                        |
| 150 | Fuel Tank Assy                   |  | 6HG-214100             |
| 151 | Flange Bolt M6X25                |  |                        |
| 152 | Tank Rubber                      |  | 6HG-E40202             |
| 153 | Fuel Filter                      |  | 6HG-214001             |
| 154 | Clamp                            |  | } 6HG-06000005         |
| 155 | Fuel Tube                        |  |                        |
| 156 | Air Filter Element - Sponge      |  | 6HG-212158             |
| 157 | Air Filter Base                  |  | 6HG-115000             |
| 158 | Air Filter Case c/w Clips        |  | 6HG-212154             |
| 159 | Exhaust Pipe                     |  | 6HG-213007             |