

HOFFMANN POWER PRODUCTS

PARTS LIST 2013

HOFFMANN Earth Auger



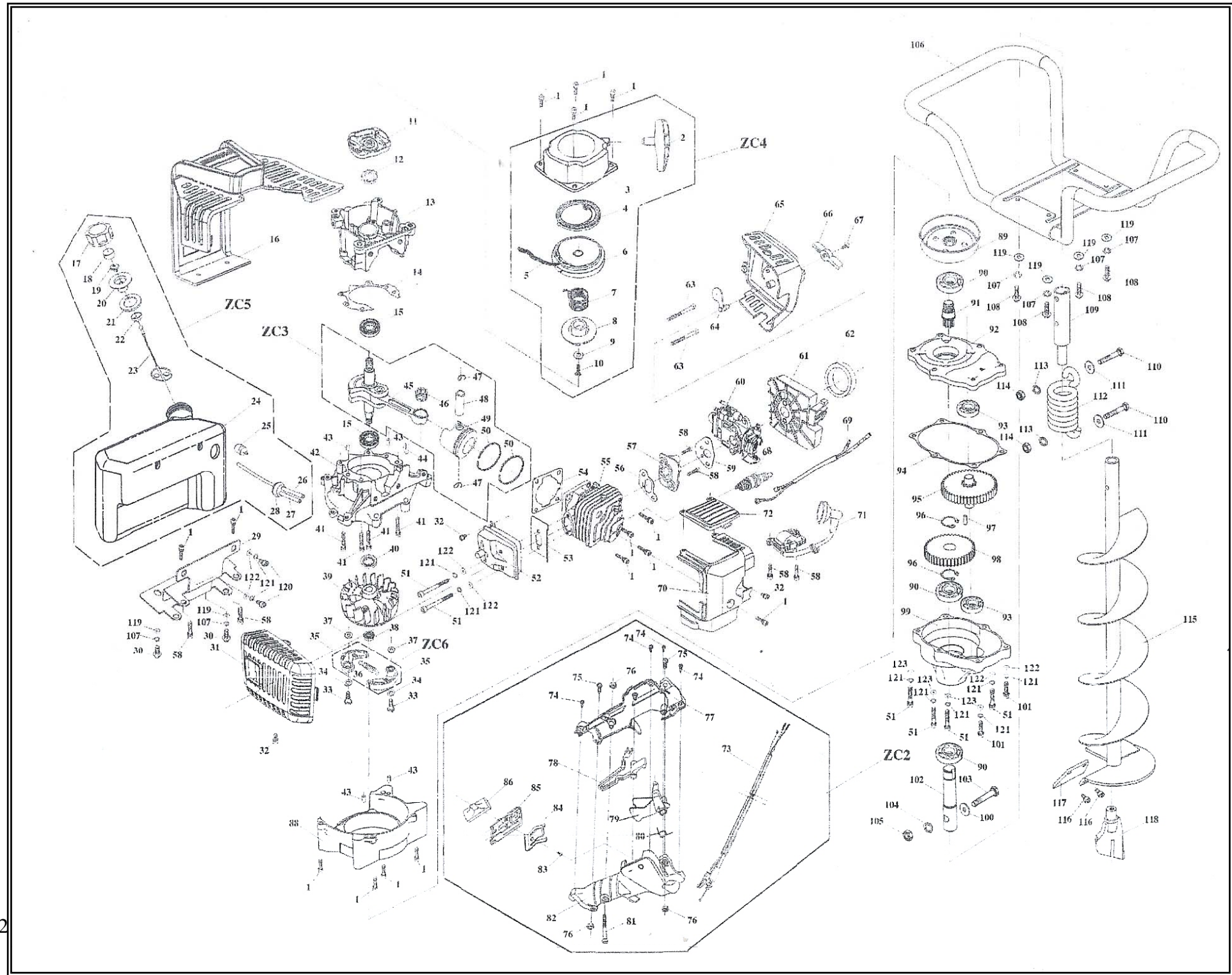
[ALL PARTS ARE SUBJECT TO STANDARD HOFFMANN TERMS AND CONDITIONS OF SALE 2010](#)

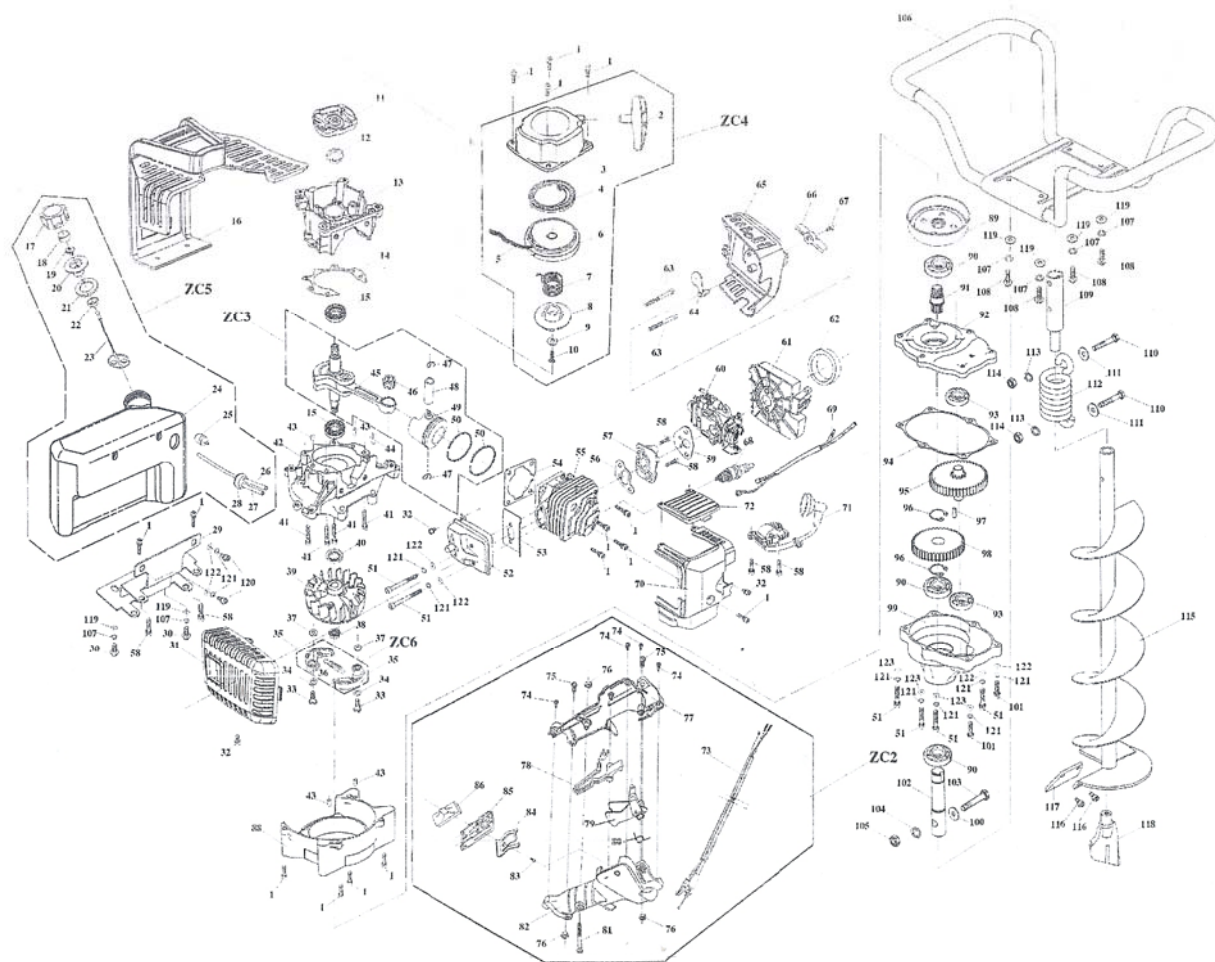
Replacement parts are not manufactured, sold or warranted by O.E.M's and any part numbers and or descriptions are used for identification purposes only.

Manufacturers names, numbers and descriptions are used for reference purposes only and it is not implied that any part listed is the product of the manufacturers.

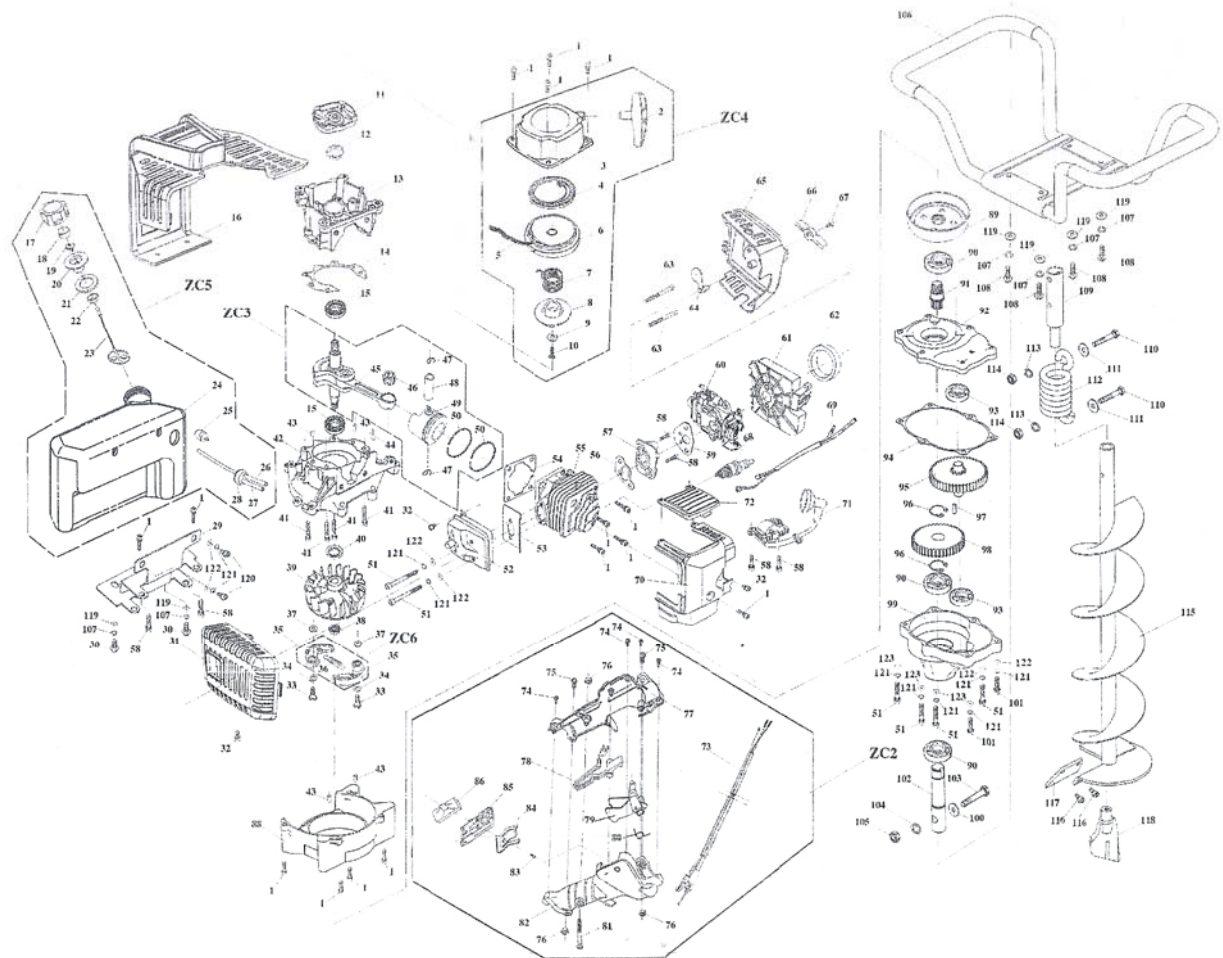
All pictures and drawings are for reference purposes only; any specifications appearing in any documents emanating from The Company are approximate only and are subject to modifications without notice.

All rights reserved, material contained in this publication for which copyright is acknowledged. No part of this publication may be reproduced or transmitted in any form or by any means without written permission of the copyright holder. Copyright Hoffmann International©2012.

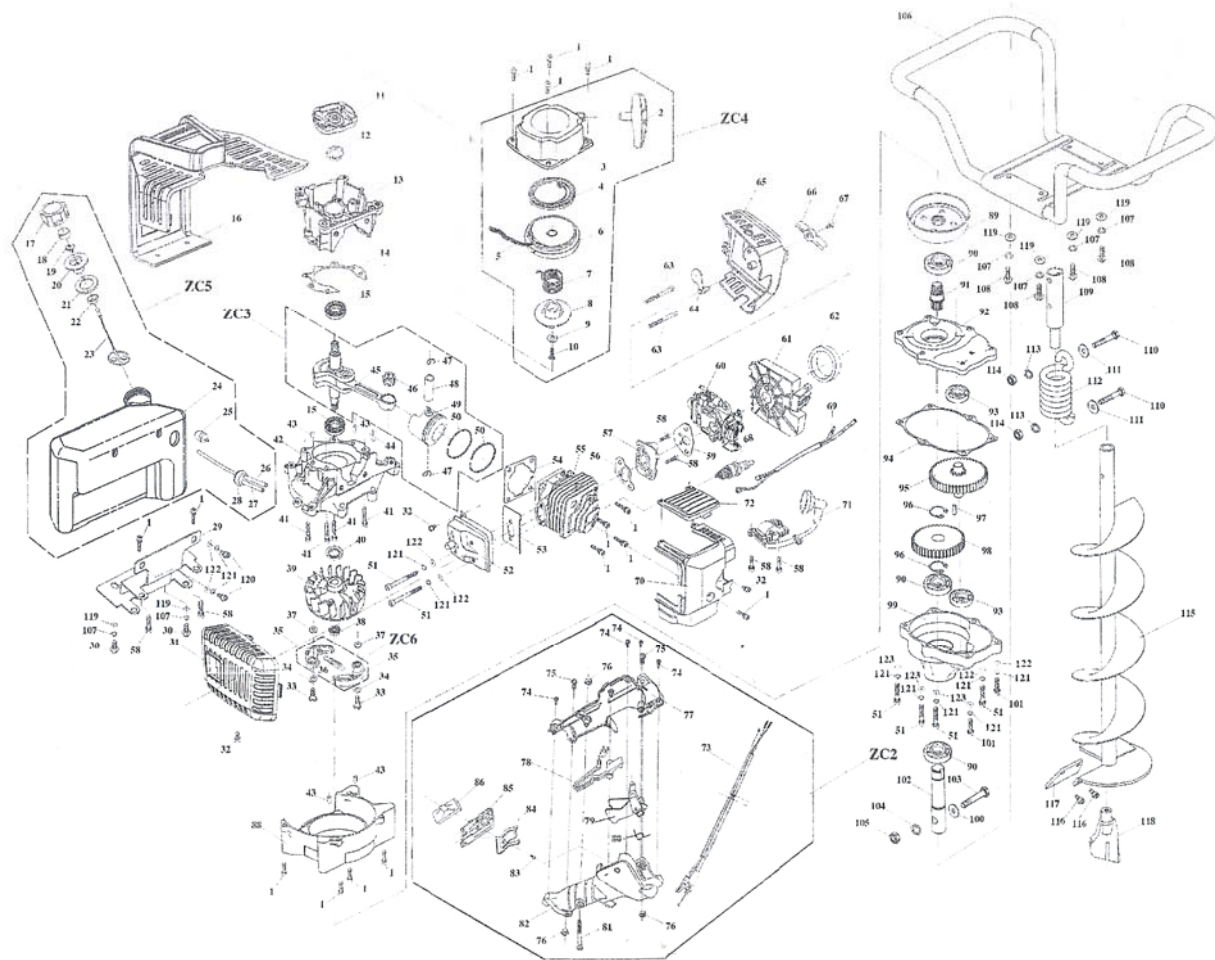




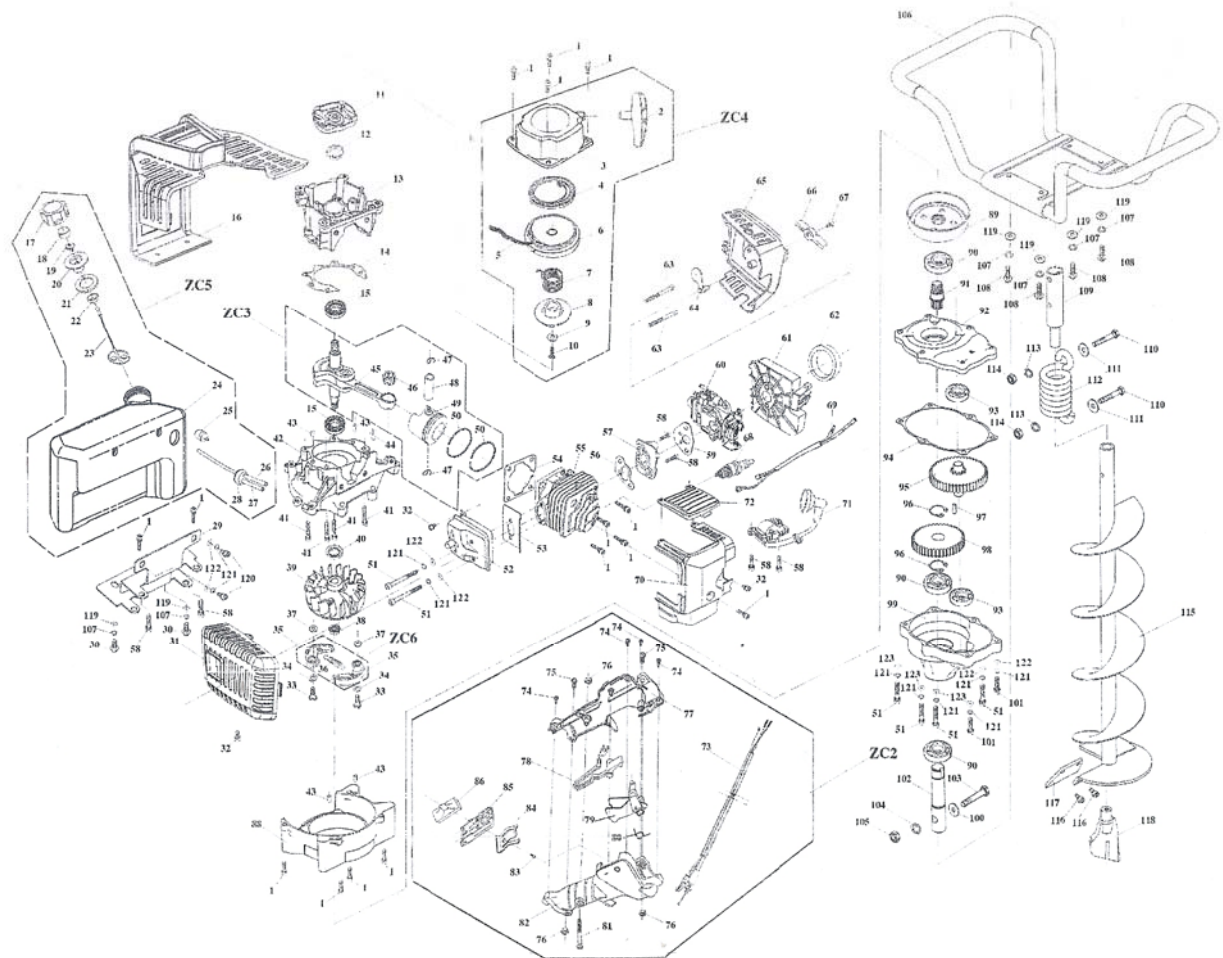
No	Description	QTY.	Part No.
1	Inner hexagonal screw	15	GB/T 9074
ZC4	Easy starter assy	1	GC415-25000Y
	Normal starter assy	1	GC415-25000
2	Handle starter	1	GC415-25311
3	Cover of easy starter	1	GC415-25110-2
4	Spring of easy starter	1	GC415-25212-2
5	Cord pull	1	GC415-25301
6	Pulley of easy starter	1	GC415-25211-2
7	Normal small spring	1	GC415-25513
8	Acceptance of easy starter pulley	1	GC415-25215-2
9	Washer	1	GB/T 97.1
10	Cross shape head screw	1	GB/T845
11	Driveplate of easy starter	1	GC415-25260.2
	Driveplate of normal starter	1	GC415-25260.1
12	Oil seal	1	GB/T9877.1
13	Left crankcase	1	GC415-13201
14	Washer of crankcase	1	GC415-13090
15	Bearing ball	2	GB/T 276
16	Housing of fuel tank	1	DZ520-18303
ZC5	Fuel tank assy	1	DZ520-18300
17	Fuel cap	1	GC415-18032
18	Filter continuous of fuel cap	1	GC415-18209



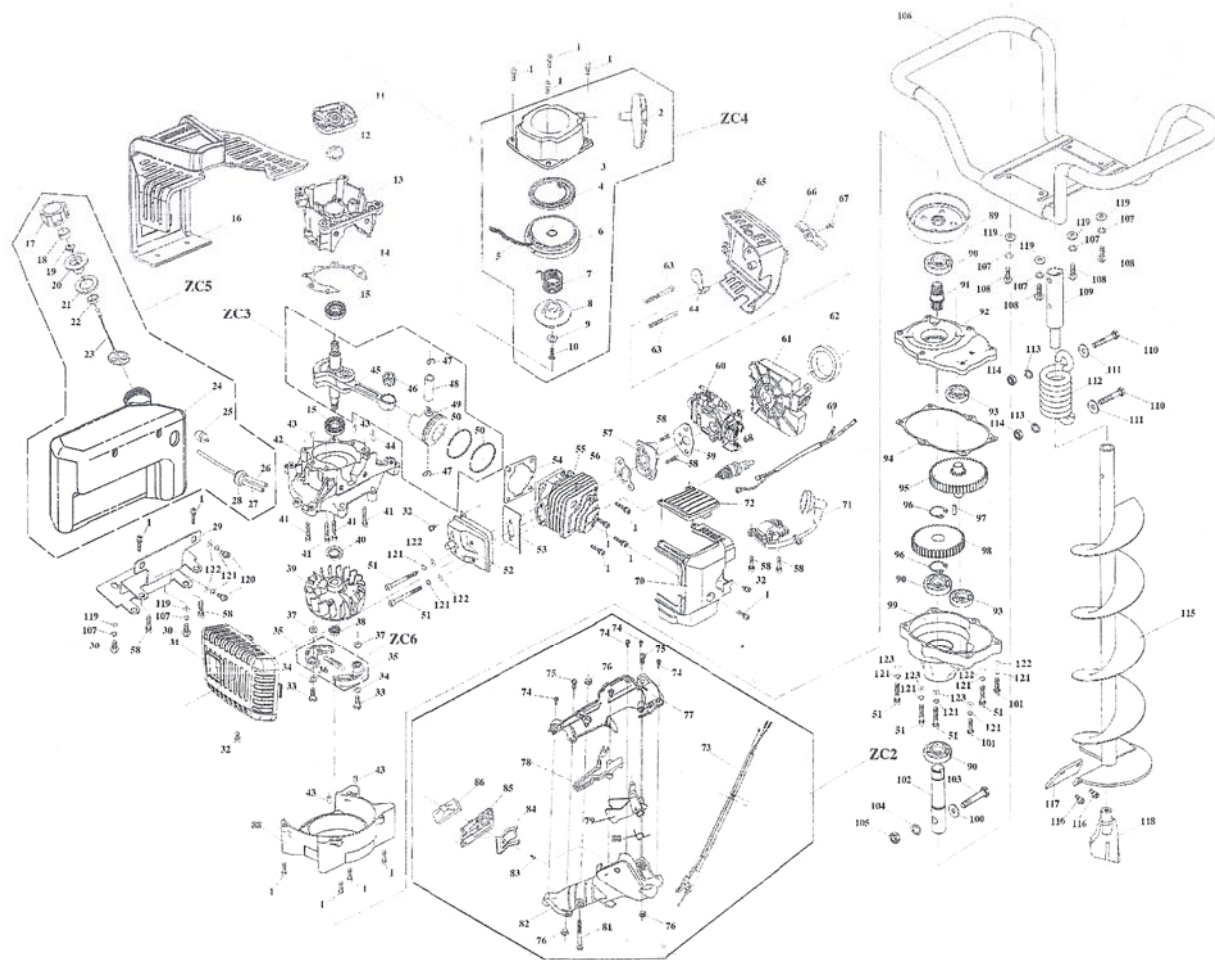
No	Description	QTY.	Part No.
19	Vent hole	1	GC415-17402
20	Stand of vent hole	1	GC415-18208
21	Washer of fuel cap	1	GC415-18033
22	Stand of prevent fall off plate	1	GC415-17133
23	Plate of prevent fall off	1	GC415-18031
24	Fuel cap component	1	DZ520-18320
25	Fuel filter	1	GC415-18034
26	Fuel inlet	1	GC415-18101-2
27	Fuel return tube	1	GC415-18101-1
28	Stand of fuel tube	1	GC415-18104
29	Stand of fuel tank	1	DZ520-16308
30	Bolt	2	GB/T 16674.1
31	Muffle housing	1	DZ520-21301
32	Inner hexagonal screw	3	GB/T9074
33	Screw of clutch	2	GC415-22133
34	Corrugated gasket	2	GB/T 95
ZC6	Clutch assy	1	GC415-22110
35	Support clutch	2	GC415-22112
36	Clutch spring	1	GC41522113
37	Gasket	2	GB/T 97.1
38	Flange nut	1	GB/T 6177.1
39	Flywheel assy	1	GC415-15110



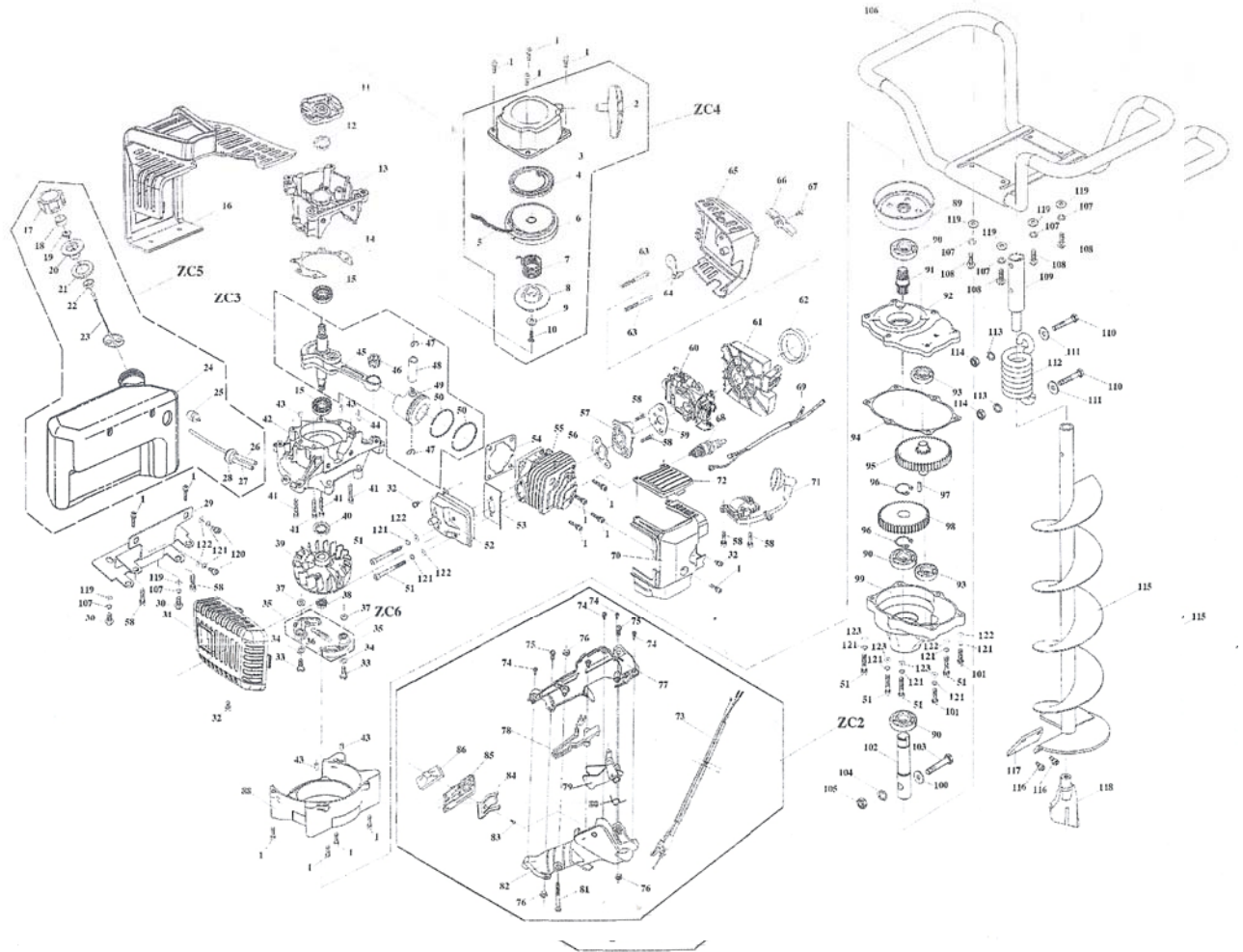
No	Description	QTY.	Part No.
40	Oil seal	1	GB/T 9877.1
41	Inner hexagonal screw	4	GB/T 9074
42	Right crank case	1	GC415-13101
43	Round Pin	4	GB/T 119.1
44	Woodruff key	1	GB/T 1099
ZC3	Crankshaft and piston assy	1	GC520-1400
	Crankshaft and piston assy	1	GC415-1400
45	Crankshaft assy	1	GC415-14110
46	Bearing ball	1	JB2581
47	Snap ring of piston pin	2	GC520-14002
	Snap ring of piston pin	2	GC415-14002
48	Piston pin	1	GC520-14001
	Piston pin	1	GC415-14001
49	Piston	1	GC520-14211
	Piston	1	GC415-14211
50	Piston ring	2	GC520-14311
	Piston ring	2	GC415-14311
51	Inner hexagonal screw	6	GB/T 70.1
52	Muffle assy	1	PNC520-21110
53	Washer of muffle	1	GC415-21001
54	Washer of cylinder	1	GC415-12501
55	Cylinder	1	GC520-12111
	Cylinder	1	GC415-12111
56	Washer of inlet air pipe	1	GC415-16001



No	Description	QTY.	Part No.
57	Inlet air pipe	1	GC415-16111
58	Inner hexagonal screw	6	GB/T 9074
59	Washer of carburettor	1	GC415-18204
60	Carburettor assy	1	GC415-18200
61	Air filter	1	DZ520-16211
62	Ring sponge	1	DZ520-16307
63	Inner hexagonal screw	2	GB/T 70.1
64	Choke	1	DZ520-16420
65	Air filter cover	1	DZ520-16301
66	Choke knob	1	DZ520-16426
67	Cross shape head screw	1	GB/T845
68	Spark plug	1	GC415-26200
69	Switch wire	1	GC415-26151
70	Cylinder cover	1	DZ520-11400
71	Ignition assy	1	GC415-26110
72	Air deflector of cylinder cover	1	DZ520-11401
73	Throttle cable and switch wire	1	DZ520-58110
ZC2	Control handle assy	1	DZ520-47000
74	Cross shape head screw	4	GB/T 845
75	Inner hexagonal screw	2	GB/T 70.1
76	Hexagonal nut	3	GB/T 41
77	Up handle	1	DZ4900-56001
78	Safety trigger	1	DZ4900-54101
79	Trigger	1	DZ4900-54102



No	Description	QTY.	Part No.
80	Torsional spring of trigger	1	DZ4900-54103
81	Inner hexagonal screw	1	GB/T 70.1
82	Down handle	1	DZ4900-56002
83	Cross shape head screw	1	GB/T 845
84	Switch wire reed	1	DZ4900-58212
85	Wire clip	1	DZ4900-58211
86	Up cover of switch	1	DZ4900-58210
88	Connector stand	1	DZ520-58210
89	Drum clutch	1	DZ520-22121
90	Bearing ball	3	GB/T 276
91	7 tooth gear	1	DZ520-58301
92	Cover of gear box	1	DZ520-58303
93	Bearing ball	2	GB/T 276
94	Gasket of crankcase	1	DZ520-58304
95	48 tooth gear	1	DZ520-58305
96	Circlip of shaft	2	GB/T 894.1
97	Pin	1	GB/T 119.1
98	44 tooth gear	1	DZ520-58306
99	Gear box	1	DZ520-58307
100	Washer	1	GB/T 97.1
101	Inner hexagonal screw	2	GB/T 70.1
102	Output shaft	1	DZ520-58308
103	Pin of output shaft	1	DZ520-58410
104	Spring washer	1	GB/T93



No	Description	QTY.	Part No.
105	Hexagonal nut	1	GB/T 41
106	Panel shape handle	1	DZ520-58400
107	Spring washer	6	GB/T93
108	Small bolt	4	GB/T 16674.1
109	Connect shaft	1	DZ520-58602
110	Damping spring	2	DZ520-58409
111	Washer	2	GB/T 96.1
112	Damping spring	1	DZ520-58603
113	Spring washer	2	GB/T93
114	Hexagonal nut	2	GB/T 41
115	Screw capstan head	1	DZ520-58610
116	Inner hexagonal screw	2	GB/T 70.1
117	Blade	1	DZ520-58601
118	Drill assy	1	DZ520-58630
119	Washer	6	GB/T 97.1
120	Inner hexagonal screw	2	GB/T 70.1
121	Spring washer	10	GB/T93
122	Washer	6	GB/T 97.1
123	Washer	4	GB/T 97.1