

# **HOFFMANN POWER PRODUCTS**

## **PARTS LIST 2017**

### **6" SELF-PRIMING PUMP**

#### **MODEL 150ZB**



**ALL PARTS ARE SUBJECT TO STANDARD HOFFMANN TERMS AND CONDITIONS OF SALE 2010**

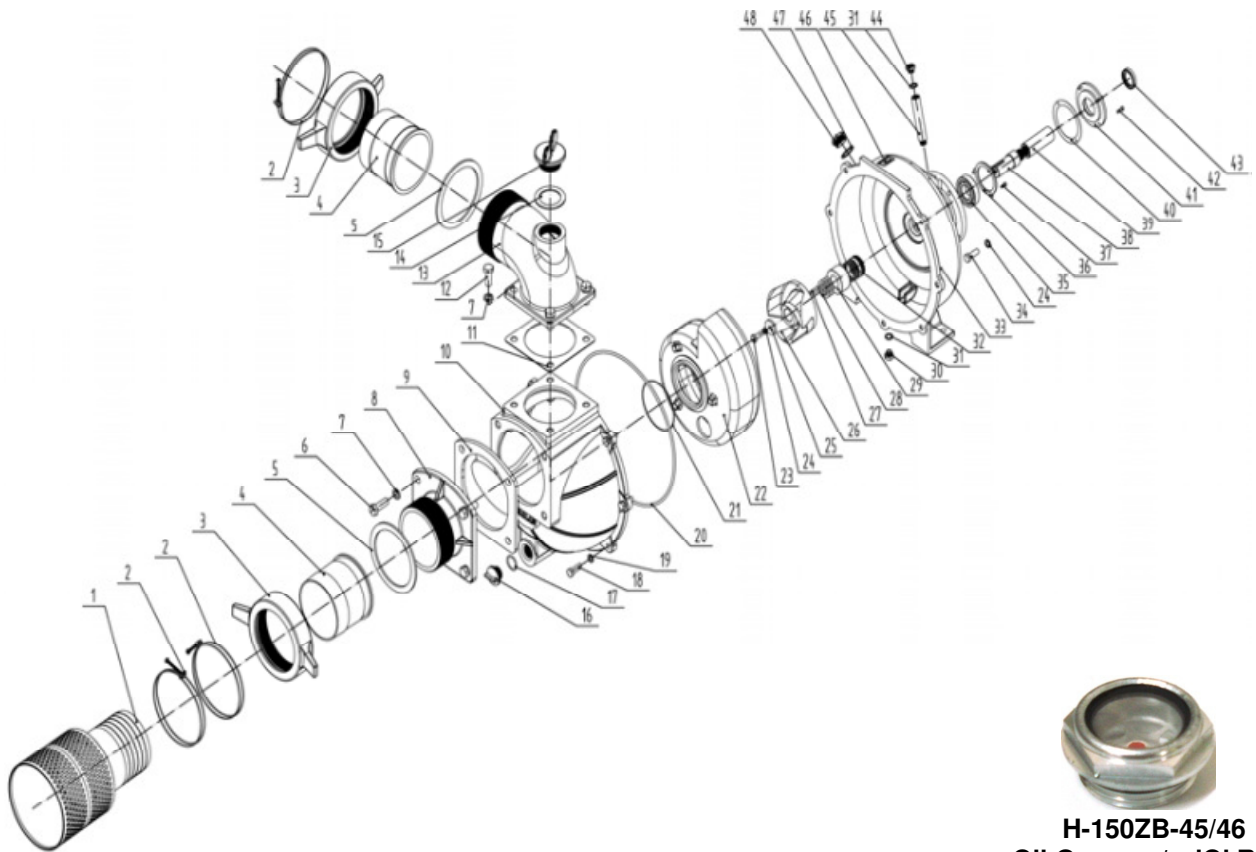
Replacement parts are not manufactured, sold or warranted by O.E.M's and any part numbers and or descriptions are used for identification purposes only.

Manufacturers names, numbers and descriptions are used for reference purposes only and it is not implied that any part listed is the product of the manufacturers.

All pictures and drawings are for reference purposes only; any specifications appearing in any documents emanating from The Company are approximate only and are subject to modifications without notice.

All rights reserved, material contained in this publication for which copyright is acknowledged. No part of this publication may be reproduced or transmitted in any form or by any means without written permission of the copyright holder. Copyright Hoffmann International©2012.

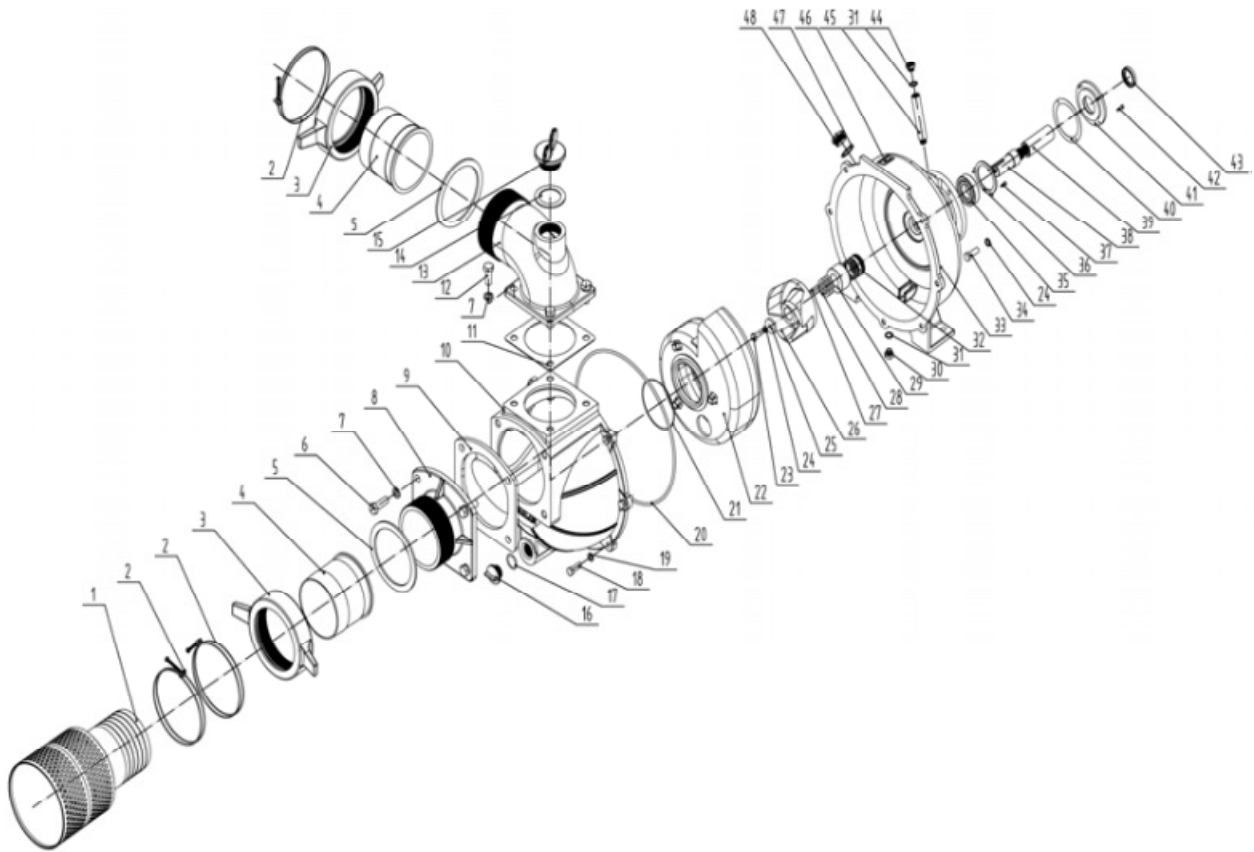
### 6" Self-Priming Pump (150ZB)



H-150ZB-45/46  
Oil Gauge c/w 'O' Ring

| No | Description              | QTY. | Part No    |
|----|--------------------------|------|------------|
| 1  | Filter Net               | 1    | 150ZB-01   |
| 2  | Clamp                    | 3    | 150ZB-02   |
| 3  | Wing Nut Metal           | 2    | H-150ZB-03 |
| 4  | Hose Connector Metal     | 2    | H-150ZB-04 |
| 5  | Seal Ring Hose Connector | 2    | H-150ZB-05 |
| 6  | Bolt M16*45              | 4    | 150ZB-06   |
| 7  | Spring Washer $\phi 16$  | 8    | 150ZB-07   |
| 8  | Suction Flange           | 1    | 150ZB-08   |
| 9  | Check Valve              | 1    | H-150ZB-09 |
| 10 | Pump Body                | 1    | H-150ZB-10 |
| 11 | Gasket Discharge Valve   | 1    | H-150ZB-11 |
| 12 | Bolt M16*40              | 4    | 150ZB-12   |
| 13 | Discharge Flange         | 1    | H-150ZB-13 |
| 14 | Seal Plug Packing 2"     | 1    | H-150ZB-14 |
| 15 | Primary Plug 2"          | 1    | H-150ZB-15 |
| 16 | Drain Plug 1"            | 1    | HP200-007  |
| 17 | Plug Packing 1"          | 1    | HP200-008  |
| 18 | Bolt M12*35              | 7    | 150ZB-16   |
| 19 | Spring Washer $\phi 12$  | 7    | 150ZB-17   |
| 20 | 'O'-Ring, Pump Housing   | 1    | H-150ZB-18 |
| 21 | 'O'-Ring, Volute Casing  | 1    | H-150ZB-19 |
| 22 | Diffusor – Volute Casing | 1    | H-150ZB-20 |
| 23 | Bolt M10*30              | 1    | 150ZB-21   |

### 6" Self-Priming Pump (150ZB)



| No | Description                                       | QTY. | Part No    |
|----|---|------|------------|
| 24 | Spring Washer $\phi 10$                           | 5    | 150ZB-22   |
| 25 | Spring Washer $\phi 37/\phi 11$                   | 1    | 150ZB-23   |
| 26 | Impeller, Keyed                                   | 1    | H-150ZB-24 |
| 27 | Key 7 <sup>mm</sup> x 33 <sup>mm</sup> , Impeller | 1    | H-150ZB-25 |
| 28 | Adjusting Shim                                    | 3    | H-150ZB-26 |
| 29 | Cushion Block                                     | 1    | H-150ZB-27 |
| 30 | Drain Plug, Pump Cover                            | 1    | H-150ZB-28 |
| 31 | Gasket, Drain Plug Pump Cover                     | 2    | H-150ZB-29 |
| 32 | Mechanical Seal                                   | 1    | H-150ZB-30 |
| 33 | Pump Cover  | 1    | H-150ZB-31 |
| 34 | Bolt $\frac{3}{8}$ " - 16unc*32                   | 4    | 150ZB-32   |
| 35 | Bearing   | 1    | H-150ZB-33 |
| 36 | Binder Plate - 3 Holes                            | 1    | H-150ZB-34 |
| 37 | Bolt  | 3    | 150ZB-35   |
| 38 | Connection Shaft 2                                | 1    | 150ZB-36   |
| 39 | Connection Shaft 1                                | 1    | 150ZB-37   |
| 40 | Gasket Binder Plate, 4 Holes                      | 1    | H-150ZB-38 |
| 41 | Binder Plate, 4 Holes                             | 1    | H-150ZB-39 |
| 42 | Bolt  | 4    | 150ZB-40   |
| 43 | Oil Seal  | 1    | H-150ZB-41 |
| 44 | Oiling Plug                                       | 1    | H-150ZB-42 |
| 45 | Oil Filling Pipe                                  | 1    | H-150ZB-43 |
| 46 | Oil Leveler/Dipstick                              | 1    | H-150ZB-44 |
| 47 | Gasket  | 1    | 150ZB-45   |
| 48 | Plug Screw  | 1    | 150ZB-46   |