

# **HOFFMANN POWER PRODUCTS**

## **PARTS LIST 2013**

### **HOFFMANN Brush Cutter**

### **PNBC520-3**



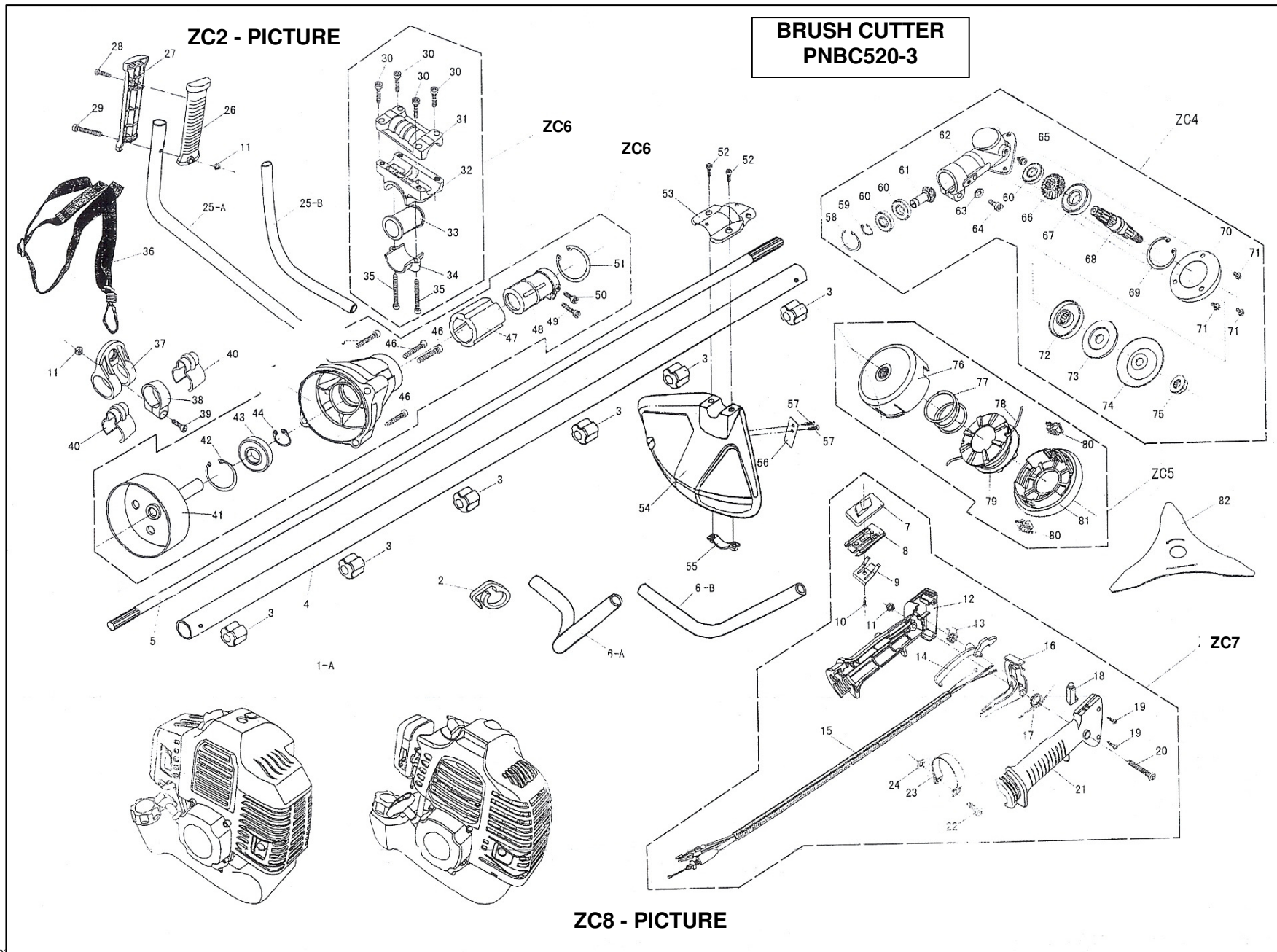
**ALL PARTS ARE SUBJECT TO STANDARD HOFFMANN TERMS AND CONDITIONS OF SALE 2010**

Replacement parts are not manufactured, sold or warranted by O.E.M's and any part numbers and or descriptions are used for identification purposes only.

Manufacturers names, numbers and descriptions are used for reference purposes only and it is not implied that any part listed is the product of the manufacturers.

All pictures and drawings are for reference purposes only; any specifications appearing in any documents emanating from The Company are approximate only and are subject to modifications without notice.

All rights reserved, material contained in this publication for which copyright is acknowledged. No part of this publication may be reproduced or transmitted in any form or by any means without written permission of the copyright holder. Copyright Hoffmann International©2012.



BRUSH CUTTER PNBC520-3			
No	Description	Qty	Part No.
1			
2			
3			
4	Aluminium Pipe	1	PNBC520-3-4512
5	Shaft	1	PNBC520-3-4513
6			
7			
8			
9			
10	Air Filter Assy		PNBC520-3-03ASSY
11	Carburettor	1	PNBC520-3-0014
12			
13			
14	Inlet Air Insulator	1	PNBC520-3-0018
15			
16	Spark Plug	1	PNBC520-3-0002
17			
18	Top Cover	1	PNBC520-0022
19			
20			
21	Cylinder Head	1	PNBC520-3-0011
22	Cylinder Gasket	1	PNBC520-3-0179
23	Exhaust Gasket	1	PNBC520-3-082
24	Muffler	1	PNBC520-3-0083
25			
26			
27			
28	Ignition Coil	1	PNBC520-3-0010
29			
30	Fan Cover		PNBC520-3-0021
31			
32			
33			
34			
35	Clutch Assy	1	PNBC520-3-0001
36	Belt Over Shoulder		PNBC520-3-0036
37			
38	Flywheel	1	PNBC520-3-0013
39			
40			
41	Crankshaft Case	1	PNBC520-3-0020
42			
43			
44			
45	Crankshaft Set c/w C/Rod/Brg	1	PNBC520-3-0045
46	Conrod Needle Bearing	1	PNBC520-3-0025
47			
48	Piston Kit c/w Rings/Circlip/GI Pin Piston 44 <sup>mm</sup>	1	PNBC520-3-0006 PNBC520-3-0048
49			
50	Piston Ring Set of 2 (44 <sup>mm</sup> )	1	PNBC520-3-0005

51			
52	RIH Crankcase	1	PNBC520-3-0106
53Y	Starting Cup	1	PNBC520-3-0024
54	Shield		PNBC520-3-0054
55			
56			
57			
58			
59			
60			
61			
62			
66			
67			
68			
69			
70			
71			
72			
73			
74			
75			
76			
77	Fuel Tank	1	PNBC520-3-0101
78	Fuel Tank Bracket	1	PNBC520-3-078
79			
80			
81			
82	Blade 255 <sup>mm</sup> x 1.6 <sup>mm</sup> x 254 x 3T	1	PNBC520-3-BCBI
ZC1	Recoil Starter	1	PNBC520-3-0015
ZC3	Nylon Cutter	1	PNBC520-3-0017
ZC2	Aluminium Rope Adjuster		PNBC520-3-OZC2
ZC4	Gearbox Assy		PNBC520-3-OZC4
ZC6	Control Assy		PNBC520-3-OZC6
ZC7	Complete Hand Control c/w ---- Assy		PNBC520-3-4606
ZC8	Aluminium Pipe c/w Brackets		PNBC520-3-4512